



HAWK

PERFORMANCE - RELIABILITY - SAFETY - VALUE



HAWK ENTERPRISES OF ELKHART, INC

52744 Park Six Court - Elkhart Indiana 46514

www.hawkenterprises.com

Table of Contents

| | |
|--------------------------------|---------|
| Brush Cover Colors | Page 3 |
| Mighty | Page 4 |
| Standard | Page 6 |
| 2-Speed | Page 8 |
| Xtra Heavy Duty | Page 10 |
| Brute | Page 12 |
| Pro | Page 15 |
| Osprey | Page 17 |
| Glide Freedom | Page 20 |
| Merlin | Page 23 |
| Wingspan | Page 26 |
| Raptor | Page 38 |
| Red Tail | Page 30 |
| TigerHawks | Page 32 |
| Burnishers | Page 37 |
| Black Hawks | Page 51 |
| Propane | Page 57 |
| Air Movers | Page 59 |
| Harrier Back Pack Vacuum | Page 69 |
| Wet/Dry Vacuums | Page 71 |
| Extractors | Page 75 |
| Talon | page 77 |
| Accessories | Page 79 |

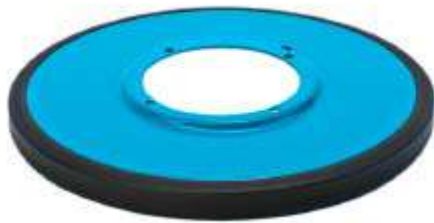
Brush Cover Colors



RED
HAMMER



BLACK
WRINKLE



MOODY BLUE
PEEL



HUNTER GREEN
PEEL



SILVER
HAMMERTONE
PEEL



ORANGE
PEEL



OCEAN BLUE
PEEL



BLACK
PLASTIC
WRINKLE



GARNET
PEEL



CHROME
PLATED



YELLOW



Mighty Hawk Machine



ELKHART, IN



Shown with optional cord hook.

You will appreciate the performance, versatility and value in the Mighty Hawk Floor Machine. The 1 HP TEFC AC motor and XHD triple planetary gears deliver huge power in a small, manageable package. It's ideal for use in tight places, stairs & landings, restrooms, and showers. Also good for edging. Mighty Hawk is available in 13", 15" and 17" sizes to fit your job. It's also available in two handle types: standard (rigid) or telescoping design.

Features

- Extremely quiet
- Dual capacitor, 56 frame,
- TEFC (totally enclosed fan cooled) motor for reliability
- 50-foot power cord with molded plug
- All steel construction for superior strength and longevity
- 1-year warranty
- Thumb-operated safety switch
- Negative pressure on/off switch
- Dual steel operating trigger for left or right-hand operation
- One-piece industrial powder coated heavy duty steel handle for optimum durability
- Optional telescopic handle
- Welded frame for rugged, reliable performance
- Non-marking, 5" ball bearing wheels
- Variable position, positive lock handle and vinyl grips for operator comfort and safety
- 360-degree wraparound bumper -- no tools needed for replacement



UL/CUL Approved
Machine

H

A

W

K



Technical Specifications

| Model # | MIGHTY13 | MIGHTY13TH | MIGHTY15 | MIGHTY15TH | MIGHTY17 | MIGHTY17TH |
|---------------|-----------------------------|-----------------------------|-----------------------------|-----------------------------|-----------------------------|-----------------------------|
| Part # | F0060-13 | F0060-13TH | F0060-15 | F0060-15TH | F0060-17 | F0060-17TH |
| Pad Size | 13 inch | 13 inch | 15 inch | 15 inch | 17 inch | 17 inch |
| Power Source* | 115V 60 Hz | 115V 60 Hz | 115V 60 Hz | 115V 60 Hz | 115V 60 Hz | 115V 60 Hz |
| Motor/HP | 56 Frame TEFC AC 1 HP | 56 Frame TEFC AC 1 HP | 56 Frame TEFC AC 1 HP | 56 Frame TEFC AC 1 HP | 56 Frame TEFC AC 1 HP | 56 Frame TEFC AC 1 HP |
| Amp Draw | 4.8 | 4.8 | 4.9 | 4.9 | 5.6 | 5.6 |
| Gear Box | 3-Idler 11:1 Severe Duty | 3-Idler 11:1 Severe Duty | 3-Idler 11:1 Severe Duty | 3-Idler 11:1 Severe Duty | 3-Idler 11:1 Severe Duty | 3-Idler 11:1 Severe Duty |
| Brush RPM | 165 | 165 | 165 | 165 | 165 | 165 |
| Cord | 50' 14-3 | 50' 14-3 | 50' 14-3 | 50' 14-3 | 50' 14-3 | 50' 14-3 |

*230V Available *50Hz Available

Amp Draw with Appropriate Pad Driver

dB Rating: 56 Meets GS42 Requirements
Specifications subject to change without notice.

Accessories for Every Application

| Model # | MIGHTY13 | MIGHTY15 | MIGHTY17 |
|---|--------------------|--------------------|--------------------|
| Pad Driver | A0017 | A0034 | A0010 |
| Nylon Brush | A0016 | A0037 | A0004 |
| Poly Brush | A0020 | A0036 | A0002 |
| Polish Brush | A0021 | A0035 | A0006 |
| Grit Brush | A0018 | A0038 | A0008 |
| Polish (Hogs Hair) Pads (5 Per Case) | A0025-13P-CS | A0025-15P-CS | A0025-17P-CS |
| Scrub (Red) Pads (5 Per Case) | A0026-13R-CS | A0026-15R-CS | A0026-17R-CS |
| Strip (Black) Pads (5 Per Case) | A0027-13BK-CS | A0027-15BK-CS | A0027-17BK-CS |
| Optional Cord Hook | HP0004-SQCUT-BLACK | HP0004-SQCUT-BLACK | HP0004-SQCUT-BLACK |

H

A

W

K



Hawk Standard Floor Machine



ELKHART, IN



Realize maximum power with the twin capacitor, AC motor and Hawk's ruggedly reliable floor machine design! Machine operators will appreciate the solid performance of these extremely well-built floor machines that deliver on every job they tackle. The consistently unsurpassed performance of these floor machines makes them the top choice for floor cleaning challenges.

Features

- Triple idler, steel, planetary, helical-cut gear drives
- Industrial cord with molded plug for long-lasting value
- All steel construction for superior strength and longevity
- UL/CUL - approved for safe performance
- Thumb-operated safety switch
- Negative pressure on/off switch
- Dual steel operating trigger for left or right-hand operation
- One-piece chrome, heavy duty steel handle for optimum durability
- Welded frame for rugged, reliable performance
- Non-marking, 5" ball bearing wheels
- Variable position positive lock handle and vinyl grips for operator comfort and safety
- 360-degree wraparound bumper -- no tools needed for replacement



UL/CUL Approved
Machine



Technical Specifications

| Model # | HP1513-HD | HP1515-HD | HP1517-HD | HP1520-HD |
|---------------|--|--|--|--|
| Part # | F0013 | F0006 | F0009 | F0012 |
| Pad Size | 13 inch | 15 inch | 17 inch | 20 inch |
| Power Source* | 115V 60Hz | 115V 60Hz | 115V 60Hz | 115V 60Hz |
| Motor/HP | 66 Frame 1.5 HP Dual Capacitor Motor | 66 Frame 1.5 HP Dual Capacitor Motor | 66 Frame 1.5 HP Dual Capacitor Motor | 66 Frame 1.5 HP Dual Capacitor Motor |
| Amp Draw | 5.3 | 5.7 | 5.9 | 6.5 |
| Gear Box | 3-Idler 10:1 | 3-Idler 10:1 | 3-Idler 10:1 | 3-Idler 10:1 |
| Brush RPM | 175 | 175 | 175 | 175 |
| Cord **/** | 50' 14-3 | 50' 14-3 | 50' 14-3 | 50' 14-3 |

*230V Available *50Hz Available *** 75' Cord Available (12-3)
****100' Cord Available (12-3)

Amp Draw with Appropriate Pad Driver

dB Rating: 60 Meets GS42 Requirements
Specifications subject to change without notice.

Accessories for Every Application

| Model # | HP1513HD | HP1515HD | HP1517HD | HP1520HD |
|--|-------------------|-------------------|-------------------|-------------------|
| Pad Driver | A0017 | A0034 | A0010 | A0011 |
| Polish Brush | A0021 | A0035 | A0004 | A0005 |
| Poly Brush | A0020 | A0036 | A0002 | A0003 |
| Nylon Brush | A0016 | A0037 | A0006 | A0007 |
| Grit Brush | A0018 | A0038 | A0008 | A0009 |
| Polish (Hogs Hair) Pads (5 Per Case) | A0025-13P-CS | A0025-15P-CS | A0025-17P-CS | A0025-20P-CS |
| Scrub (Red)Pads (5 Per Case) | A0026-13R-CS | A0026-15R-CS | A0026-17R-CS | A0026-20R-CS |
| Strip (Black) Pads (5 Per Case) | A0027-13BK-CS | A0027-15BK-CS | A0027-17BK-CS | A0027-20BK-CS |
| 4-Gallon Solution Tank | 5 Standard colors | 5 Standard colors | 5 Standard colors | 5 Standard colors |

H

A

W

K

Hawk 2-Speed Floor Machine



H

A

W

K



UL/CUL Approved
Machine



ELKHART, IN



2-speed floor machines perform heavy duty scrubbing and stripping at the standard 175 RPM speed. With the flip of a conveniently located toggle switch, get professional high gloss buffing results at 320 RPM. You'll double your productivity potential with 2-speed floor machines.

Features

- Placement of the Hi-Lo speed control switch optimizes operating ease
- Heavy duty cord with molded plug for long-lasting value
- Steel brush covers are strong and durable
- Triple idler, steel, planetary, helical-cut gear drives
- UL/CUL - approved for safe performance
- Thumb-operated safety switch
- Negative pressure on/off switch
- Dual steel operating trigger for left or right-hand operation
- One-piece chrome, heavy duty steel handle for optimum durability
- Welded frame for rugged, reliable performance
- Non-marking, 5" ball bearing wheels
- Variable position positive lock handle and vinyl grips for operator comfort and safety
- 360-degree wraparound bumper -- no tools needed for replacement



Technical Specifications

| | | | | |
|------------------------------|----------------------------------|----------------------------------|----------------------------------|----------------------------------|
| Model # | HP1513-2S | HP1515-2S | HP1517-2S | HP1520-2S |
| Part # | F0003-13 | F0003-15 | F0003-17 | F0003-20 |
| Pad Size | 13 inch | 15 inch | 17 inch | 20 inch |
| Power Source* | 115V 50/60Hz | 115V 50/60Hz | 115V 50/60Hz | 115V 50/60Hz |
| Motor/HP | 66 Frame, 1.5 HP DC Rectified | 66 Frame, 1.5 HP DC Rectified | 66 Frame, 1.5 HP DC Rectified | 66 Frame, 1.5 HP DC Rectified |
| Amp Draw (Low / High)**** | 7.8 / 8.2 | 8.1 / 8.5 | 8.5 / 9.1 | 9.2 / 9.6 |
| Gear Box | 3-Idler 10:1 | 3-Idler 10:1 | 3-Idler 10:1 | 3-Idler 10:1 |
| Brush RPM (Low / High) | 175 / 320 | 175 / 320 | 175 / 320 | 175 / 320 |
| Cord**/** | 50' 14-3 | 50' 14-3 | 50' 14-3 | 50' 14-3 |

*230V Available ** 75' Cord Available (12-3) ***100' Cord Available (12-3)

Amp Draw with Appropriate Pad Driver

dB Rating: Low Speed -62 High Speed - 69 Meets GS42 Requirements

Specifications subject to change without notice.

Accessories for Every Application

| | | | | |
|---|-------------------|-------------------|-------------------|-------------------|
| Machine Part # | F0003-13 | F0003-15 | F0003-17 | F0003-20 |
| Pad Driver | A0017 | A0034 | A0010 | A0011 |
| High Speed Pad Driver | N/A | N/A | A0010-3 | A0011-1 |
| Polish Brush | A0021 | A0035 | A0004 | A0005 |
| Poly Brush | A0020 | A0036 | A0002 | A0003 |
| Nylon Brush | A0016 | A0037 | A0006 | A0007 |
| Grit Brush | A0018 | A0038 | A0008 | A0009 |
| Polish (Hogs Hair) Pads (5 Per Case) | A00025-13P-CS | A0025-15P-CS | A0025-17P-CS | A0025-20P-CS |
| Scrub (Red) Pads (5 Per Case) | A0026-13R-CS | A0026-15R-CS | A0026-17R-CS | A0026-20R-CS |
| Strip (Black) Pads (5 Per Case) | A0027-13BK-CS | A0027-15BK-CS | A0027-17BK-CS | A0027-20BK-CS |
| 4 Gallon Solution Tank | 5 Standard colors | 5 Standard colors | 5 Standard colors | 5 Standard colors |

H

A

W

K



Hawk Xtra Heavy Duty Floor Machine



ELKHART, IN



Optional 20#
Frame Weight
HPA0032-2P

When the job gets tough, the tough get going with Hawk's Xtra Heavy Duty floor machines. Maximum power is obtained by utilization of a 1.5 HP, twin capacitor motor driving an XHD 11:1 gearbox. With a wide range of accessories and optional weights, there's no job these machines can't handle.

Features

- Virtually indestructible gearbox
- Industrial cord with molded plug for long-lasting value
- UL/CUL - approved for safe performance
- Thumb-operated safety switch
- Negative pressure on/off switch
- Dual steel operating trigger for left or right-hand operation
- One-piece chrome, heavy duty steel handle for optimum durability
- Welded frame for rugged, reliable performance
- Non-marking, 5" ball bearing wheels
- Variable position positive lock handle and vinyl grips for operator comfort and safety
- 360-degree wraparound bumper -- no tools needed for replacement
- Solid steel coupler



UL/CUL Approved
Machine



Technical Specifications

| | | | | |
|---------------|---|---|---|---|
| Model # | HP1513-XHD | HP1515-XHD | HP1517-XHD | HP1520-XHD |
| Part # | F0013XHD | F0006XHD | F0009XHD | F0012XHD |
| Pad Size | 13 inch | 15 inch | 17 inch | 20 inch |
| Power Source* | 115V 60Hz | 115V 60Hz | 115V 60Hz | 115V 60Hz |
| Motor/HP | 66 Frame, 1.5 HP Dual Capacitor Motor | 66 Frame, 1.5 HP Dual Capacitor Motor | 66 Frame, 1.5 HP Dual Capacitor Motor | 66 Frame, 1.5 HP Dual Capacitor Motor |
| Amp Draw | 5.3 | 5.3 | 6.1 | 6.8 |
| Gear Box | 3-Idler 11:1 Severe Duty | 3-Idler 11:1 Severe Duty | 3-Idler 11:1 Severe Duty | 3-Idler 11:1 Severe Duty |
| Brush RPM | 165 | 165 | 165 | 165 |
| Cord**/** | 50' 14-3 | 50' 14-3 | 50' 14-3 | 50' 14-3 |

*230V Available *50Hz Available *** 75' Cord Available (12-3)
 **** 100' Cord Available (12-3)

Amp Draw with Appropriate Pad Driver

dB Rating: 60 Meets GS42 Requirements
Specifications subject to change without notice.

Accessories for Every Application

| | | | | |
|--------------------------------------|-------------------|-------------------|-------------------|-------------------|
| Model # | HP1513-XHD | HP1515-XHD | HP1517-XHD | HP1520-XHD |
| Pad Driver | A0017 | A0034 | A0010 | A0011 |
| Orbitec Driver | HP0018 | N/A | HP0017 | HP0020 |
| Sand Paper Driver | N/A | N/A | A0014-HD | A0014-1HD |
| Surface Prep Tool | HP0035 | N/A | HP0033 | HP0034 |
| Diamond Pad Driver | A0017DPD | N/A | A0010DPD | A0011DPD |
| Weighted DPD | A0017WTDPD | N/A | A0010WTDPD | A0011WTDPD |
| Polish Brush | A0021 | A0035 | A0004 | A0005 |
| Poly Brush | A0020 | A0036 | A0002 | A0003 |
| Nylon Brush | A0016 | A0037 | A0006 | A0007 |
| Grit Brush | A0018 | A0038 | A0008 | A0009 |
| Polish (Hogs Hair) Pads (5 Per Case) | A00025-13P-CS | A0025-15P-CS | A0025-17P-CS | A0025-20P-CS |
| Scrub (Red) Pads (5 Per Case) | A0026-13R-CS | A0026-15R-CS | A0026-17R-CS | A0026-20R-CS |
| Strip (Black) Pads (5 Per Case) | A0027-13BK-CS | A0027-15BK-CS | A0027-17BK-CS | A0027-20BK-CS |
| 4-Gallon Solution Tank | 5 Standard colors | 5 Standard colors | 5 Standard colors | 5 Standard colors |

H

A

W

K



Hawk BRUTE Floor Machine with 180-Frame TEFC Motor



Shown with optional weights

(BRUTE all chrome)



ELKHART, IN

(TEXHD)

The Brute is equipped with a severe duty, triple planetary-idler, all steel helical-cut gear drive, with steel coupler and an exclusive 180 frame TEFC (totally enclosed fan cooled) motor. TEFC units are ideal for the harshest conditions – dust, moisture, chemicals – and great for sanding, screening, stone care, concrete work, and other applications that require “Brute Force.”

Note: These units are NOT equipped with an explosion-proof motor.

Features

- | | |
|--|--|
| <ul style="list-style-type: none"> • Twin (dual) capacitor 180-frame TEFC (totally enclosed fan cooled) motor keeps out dirt, dust, and moisture for longer motor life • Virtually indestructible 11:1 gearbox • Industrial cord with molded plug • Low current draw • UL/CUL - approved for safe performance • Thumb-operated safety switch • Negative pressure on/off switch • Dual steel operating trigger for left or right-hand operation | <ul style="list-style-type: none"> • One-piece chrome, heavy duty steel handle for optimum durability • Welded frame for rugged, reliable performance • Non-marking, 5” ball bearing wheels • Variable position positive lock handle and vinyl grips for operator comfort and safety • 360-degree wraparound bumper -- no tools needed for replacement • Solid steel coupler |
|--|--|



UL/CUL Approved
Machine

H

A

W

K

Technical Specifications



| | | | | |
|------------------|--|--|--|--|
| Model # | HP1513-180BRUTE | HP1515-180BRUTE | HP1517-180BRUTE | HP1520-180BRUTE |
| Part # | F0013-180CP | F0006-180CP | F0009-180CP | F0012-180CP |
| Pad Size | 13 inch | 15 inch | 17 inch | 20 inch |
| Power Source*/** | 115V 60Hz | 115V 60Hz | 115V 60Hz | 115V 60Hz |
| Motor/HP | 180 Frame, 1.5 HP TEFC AC Dual Capacitor Motor | 180 Frame, 1.5 HP TEFC AC Dual Capacitor Motor | 180 Frame, 1.5 HP TEFC AC Dual Capacitor Motor | 180 Frame, 1.5 HP TEFC AC Dual Capacitor Motor |
| Amp Draw | 7.2 | 7.5 | 7.9 | 8.4 |
| Gear Box | 3-Idler 11:1 Severe Duty | 3-Idler 11:1 Severe Duty | 3-Idler 11:1 Severe Duty | 3-Idler 11:1 Severe Duty |
| Brush RPM | 165 | 165 | 165 | 165 |
| Cord***/**** | 50' 12-3 | 50' 12-3 | 50' 12-3 | 50' 12-3 |





*230V Available *50Hz Available *** 75' Cord Available (12-3)
 ****100' Cord Available (12-3)

Amp Draw with Appropriate Pad Driver

dB Rating: 66 Meets GS42 Requirements
Specifications subject to change without notice.

| | | | | |
|---------------|--|--|--|--|
| Model # | HP1513-180TEXHD | HP1515-180TEXHD | HP1517-180TEXHD | HP1520-180TEXHD |
| Part # | F0013-180 | F0006-180 | F0009-180 | F0012-180 |
| Pad Size | 13 inch | 15 inch | 17 inch | 20 inch |
| Power Source* | 115V 60Hz | 115V 60Hz | 115V 60Hz | 115V 60Hz |
| Motor/HP | 180 Frame, 1.5 HP TEFC AC Dual Capacitor Motor | 180 Frame, 1.5 HP TEFC AC Dual Capacitor Motor | 180 Frame, 1.5 HP TEFC AC Dual Capacitor Motor | 180 Frame, 1.5 HP TEFC AC Dual Capacitor Motor |
| Amp Draw | 7.2 | 7.5 | 7.9 | 8.4 |
| Gear Box | 3-Idler 11:1 Severe Duty | 3-Idler 11:1 Severe Duty | 3-Idler 11:1 Severe Duty | 3-Idler 11:1 Severe Duty |
| Brush RPM | Severe Duty | Severe Duty | Severe Duty | Severe Duty |
| Cord**/** | 50' 12-3 | 50' 12-3 | 50' 12-3 | 50' 12-3 |

Weight Options

| | | |
|--|--|--|
|  <p>HPA0032-1P -- Optional 25# Horseshoe Weights (each)</p> |  <p>HPA0032-2P 20# Frame Weight</p> |  <p>HP0008-45IN BRUTE Motor Mounted Weight Post Kit</p> |
|  <p>HPA0028-10P-- 10# Hexagonal weight</p> | | |

H

A

W

K



H



| Hawk Scrapers (Surface Prep): | |
|--|--------|
| 13" | HP0035 |
| 15" | N/A |
| 17" | HP0033 |
| 20" | HP0034 |



| Orbitec Diamond Driver: | |
|------------------------------------|----------|
| 13" | HP0018 |
| 15" | N/A |
| 17" | HP0017-3 |
| 20" | HP0020-3 |



| Weighted Diamond Pad Driver: | |
|---|------------------|
| 13" | A0017WTDPD (25#) |
| 15" | N/A |
| 17" | A0010WTDPD (46#) |
| 20" | A0011WTDPD (64#) |

A



| Diamond Pad Driver | |
|-------------------------------|----------|
| 13" | A0017DPD |
| 17" | A0010DPD |
| 20" | A0011DPD |



| Pad Driver: | |
|--------------------|-------|
| 13" | A0017 |
| 15" | A0034 |
| 17" | A0010 |
| 20" | A0011 |



| Sand Paper Driver: | |
|---------------------------|------------|
| 13" | N/A |
| 15" | N/A |
| 17" | A0014-HD |
| 20" | A00014-1HD |

W



| Grit Brush: | |
|--------------------|-------|
| 13" | A0018 |
| 15" | A0038 |
| 17" | A0008 |
| 20" | A0009 |



| Poly Brush: | |
|--------------------|-------|
| 13" | A0020 |
| 15" | A0036 |
| 17" | A0002 |
| 20" | A0003 |



| Nylon Brush: | |
|---------------------|-------|
| 13" | A0016 |
| 15" | A0037 |
| 17" | A0006 |
| 20" | A0007 |

K



A0001-BLK4

| |
|-------------|
| A0001-BLK4 |
| A0001-CHAR4 |
| A0001-RYB4 |
| A0001-MDB4 |
| A0001-NAT4 |



Dust Pickup System
HP0031-DC17BRUTEKIT
HP0031-DC20-BRUTEKIT



Power Lock Kit
HP0005-BLACK



Hawk Pro Machine



Pad Driver



Splash Guard

The Hawk Pro was manufactured with the professional in mind. It scrubs, strips, and handles a wide variety of severe duty work. The 180-frame TEFC motor and hardened steel gears are the backbone behind this piece which will serve in the commercial environment for decades. The Pro features include an ergonomic upper handle lock, no-spill solution tank, Pad driver, 2 -25 lb. weights, and custom splash guard.

Features

- Twin (dual) capacitor 180-frame TEFC (totally enclosed fan cooled) motor keeps out dirt, dust, and moisture for longer motor life
- Virtually indestructible 11:1 gearbox
- Industrial cord with molded plug
- Low current draw
- UL/CUL - approved for safe performance
- Thumb-operated safety switch
- Negative pressure on/off switch
- Dual steel operating trigger for left or right-hand operation
- One-piece chrome, heavy duty steel handle for optimum durability
- Welded frame for rugged, reliable performance
- Non-marking, 5" ball bearing wheels
- Variable position, positive-lock handle is ergonomic for operator comfort and safety
- Comfortable vinyl handle grips for ease of use
- 360-degree wraparound bumper -- no tools needed for replacement

H

A

W

K



Technical Specifications

| Model # | HP1513-180PRO | HP1515-180PRO | HP1517-180PRO | HP1520-180PRO |
|---------------|--|--|--|--|
| Part # | F0013-180PRO | F0006-180PRO | F0009-180PRO | F0012-180PRO |
| Pad Size | 13 inch | 15 inch | 17 inch | 20 inch |
| Power Source* | 115V 60Hz | 115V 60Hz | 115V 60Hz | 115V 60Hz |
| Motor/HP | 180 Frame, 1.5 HP TEFC AC Dual Capacitor Motor | 180 Frame, 1.5 HP TEFC AC Dual Capacitor Motor | 180 Frame, 1.5 HP TEFC AC Dual Capacitor Motor | 180 Frame, 1.5 HP TEFC AC Dual Capacitor Motor |
| Amp Draw | 7.2 | 7.5 | 7.9 | 8.4 |
| Gear Box | 3-Idler 11:1 Severe Duty | 3-Idler 11:1 Severe Duty | 3-Idler 11:1 Severe Duty | 3-Idler 11:1 Severe Duty |
| Brush RPM | 165 | 165 | 165 | 165 |
| Cord**/** | 2 - Piece 50' 12-3 | 2 - Piece 50' 12-3 | 2 - Piece 50' 12-3 | 2 - Piece 50' 12-3 |

*230V Available *50Hz Available *** 75' Cord Available (12-3)
****100' Cord Available (12-3)

Amp Draw with Appropriate Pad Driver

dB Rating: 60 Meets GS42 Requirements
Specifications subject to change without notice.

Accessories for Every Application

| Model # | HP1513-180PRO | HP1515-180PRO | HP1517-180PRO | HP1520-180PRO |
|---|---------------|---------------|---------------|---------------|
| Pad Driver | A0017 | A0034 | A0010 | A0011 |
| Polish Brush | A0021 | A0035 | A0004 | A0005 |
| Poly Brush | A0020 | A0036 | A0002 | A0003 |
| Nylon Brush | A0016 | A0037 | A0006 | A0007 |
| Grit Brush | A0018 | A0038 | A0008 | A0009 |
| Polish (Hogs Hair) Pads (5 Per Case) | A0025-13P-CS | A0025-15P-CS | A0025-17P-CS | A0025-20P-CS |
| Scrub (Red)Pads (5 Per Case) | A0026-13R-CS | A0026-15R-CS | A0026-17R-CS | A0026-20R-CS |
| Strip (Black) Pads (5 Per Case) | A0027-13BK-CS | A0027-15BK-CS | A0027-17BK-CS | A0027-20BK-CS |
| 4-Gallon Solution Tank | Natural | Natural | Natural | Natural |

H

A

W

K



Hawk Osprey MP



ELKHART, IN



The Osprey is an all-surface restoration machine. The versatility of this unit spans carpet, vinyl, stone, ceramic tile, wood, concrete, and natural stone. The built-in 45 PSI solution pump is controlled through a convenient toggle switch. The adjustable 60-degree spray nozzle puts the precise amount of cleaning solution where its needed there by reducing moisture and chemical usage. The 180-frame TEFC motor, hardened steel gears, and no-spill solution tank make the Osprey the best machine for all surface restoration needs.

Features

- | | |
|---|---|
| <ul style="list-style-type: none"> • Twin (dual) capacitor 180-frame TEFC (totally enclosed fan cooled) motor keeps out dirt, dust, and moisture for longer motor life. • Virtually indestructible 11:1 gearbox • Industrial cord with molded plug. • Low current draw • Thumb-operated safety switch • Negative pressure on/off switch • Dual steel operating trigger for left or right-hand operation • 45 PSI pump | <ul style="list-style-type: none"> • 1/4 GPM 60° spray nozzle • One-piece chrome, heavy duty steel handle for optimum durability • Welded frame for rugged, reliable performance • Non-marking, 5" ball bearing wheels • Variable position positive lock handle and vinyl grips for operator comfort and safety • 360-degree wraparound bumper -- no tools needed for replacement |
|---|---|

H

A

W

K

Technical Specifications



H

A

W

K


| | | | | |
|---------------|--|--|--|--|
| Model # | HP1513-180 OSPREY | HP1515-180 OPREY | HP1517-180 OSPREY | HP1520-180 OSPREY |
| Part # | F0013-OSPREY | F0006-OSPREY | F0009-OSPREY | F0012-OSPREY |
| Pad Size | 13 inch | 15 inch | 17 inch | 20 inch |
| Power Source* | 115V 60Hz | 115V 60Hz | 115V 60Hz | 115V 60Hz |
| Motor/HP | 180 Frame, 1.5 HP TEFC AC Dual Capacitor Motor | 180 Frame, 1.5 HP TEFC AC Dual Capacitor Motor | 180 Frame, 1.5 HP TEFC AC Dual Capacitor Motor | 180 Frame, 1.5 HP TEFC AC Dual Capacitor Motor |
| Amp Draw | 7.2 | 7.5 | 7.9 | 8.4 |
| Gear Box | 3-Idler 11:1 Severe Duty | 3-Idler 11:1 Severe Duty | 3-Idler 11:1 Severe Duty | 3-Idler 11:1 Severe Duty |
| Brush RPM | 165 | 165 | 165 | 165 |
| Cord**/** | 2 - Piece 50' 12-3 | 2 - Piece 50' 12-3 | 2 - Piece 50' 12-3 | 2 - Piece 50' 12-3 |

*230V Available *50Hz Available *** 75' Cord Available (12-3)
****100' Cord Available (12-3)


Amp Draw with Appropriate Pad Driver

dB Rating: 66 Meets GS42 Requirements
Specifications subject to change without notice.


Weight Options




HPA0032-1P -- Optional 25#
Horseshoe Weights (each)



HPA0032-2P
20# Frame
Weight



HP0008-45IN
BRUTE
Motor Mounted
Weight Post Kit



HPA0028-10P--
10# Hexigonal weight



| Hawk Scapers (Surface Prep): | |
|---------------------------------|--------|
| 13" | HP0035 |
| 15" | N/A |
| 17" | HP0033 |
| 20" | HP0034 |



| Orbitec Diamond Driver: | |
|----------------------------|--------|
| 13" | HP0018 |
| 15" | N/A |
| 17" | HP0017 |
| 20" | HP0020 |



| Weighted Diamond Pad Driver: | |
|---------------------------------|------------------|
| 13" | A0017WTDPD (25#) |
| 15" | N/A |
| 17" | A0010WTDPD (46#) |
| 20" | A0011WTDPD (64#) |



H



| Diamond Pad Driver | |
|--------------------|----------|
| 13" | A0017DPD |
| 17" | A0010DPD |
| 20" | A0011DPD |



| Pad Driver: | |
|-------------|-------|
| 13" | A0017 |
| 15" | A0034 |
| 17" | A0010 |
| 20" | A0011 |



| Tufted Pad Driver: | |
|--------------------|---------|
| 17" | A0010-4 |
| 20" | A0011-3 |

A



| Sand Paper Driver: | |
|--------------------|------------|
| 13" | N/A |
| 15" | N/A |
| 17" | A0014-HD |
| 20" | A00014-1HD |



| Grit Brush: | |
|-------------|-------|
| 13" | A0018 |
| 15" | A0038 |
| 17" | A0008 |
| 20" | A0009 |



| Poly Brush: | |
|-------------|-------|
| 13" | A0020 |
| 15" | A0036 |
| 17" | A0002 |
| 20" | A0003 |



| Nylon Brush: | |
|--------------|-------|
| 13" | A0016 |
| 15" | A0037 |
| 17" | A0006 |
| 20" | A0007 |

W

K



Dust Pickup System
 HP0031-DC17-BRUTEKIT
 HP0031-DC20-BRUTEKIT

Hawk Glide Freedom

Revolutionary Design that Utilizes . . .

- Floating head to ensure 100% pad contact at all times
- Quick handle/carriage removal



ELKHART, IN



(GLIDE20)



(GLIDE17XHD)

**40% More
Production**

The Hawk Glide Floor Machine delivers up to 40% more performance and superior safety over traditional floor machines. Our unique WD detachable handle design provides 100% wheel and pad contact with the floor, while incorporating forward and backward movement. It is faster than the traditional side to side method. Its ideal for use by those with little operational experience.

Features

- | | |
|---|---|
| <ul style="list-style-type: none"> • Quick handle-carriage removal for transport and storage • Low current draw • Thumb-operated safety switch • Negative pressure on/off switch • Dual steel operating trigger for left or right-hand operation • One-piece, heavy duty, industrial powder-coated, steel handle for optimum durability | <ul style="list-style-type: none"> • Welded frame for rugged, reliable performance • Non-marking, 2x6" ball bearing wheels • Variable position positive lock handle and vinyl grips for operator comfort and safety • 360-degree wraparound bumper -- no tools needed for replacement |
|---|---|



H

A

W

K

Technical Specifications



H

| | | | | |
|---------------|--|--|--|--|
| Model # | GLIDE17 | GLIDE17XHD | GLIDE20 | GLIDE20XHD |
| Part # | F0091-17 | F0091-17XHD | F0091-20 | F0091-20XHD |
| Pad Size | 17 inch | 17 inch | 20 inch | 20 inch |
| Power Source* | 115V60Hz | 115V 60Hz | 115V 60Hz | 115V 60Hz |
| Motor/HP | 66 Frame 1.5 HP Dual Capacitor Motor | 66 Frame 1.5 HP Dual Capacitor Motor | 66 Frame 1.5 HP Dual Capacitor Motor | 66 Frame 1.5 HP Dual Capacitor Motor |
| Amp Draw | 5.3 | 6.1 | 5.9 | 6.8 |
| Gear Box | 3-Idler 10:1 | 3-Idler 11:1 Severe Duty | 3-Idler 10:1 | 3-Idler 11:1 Severe Duty |
| Brush RPM | 175 | 165 | 175 | 165 |
| Cord | 50' 14-3 | 50' 14-3 | 50' 14-3 | 50' 14-3 |

*230V Available *50Hz Available *** 75' Cord Available (12-3)
****100' Cord Available (12-3)

Amp Draw with Appropriate Pad Driver

dB Rating: 66 Meets GS42 Requirements
Specifications subject to change without notice.

A

| | | | | |
|------------------------------|----------------------------------|----------------------------------|----------------------------------|----------------------------------|
| Model # | GLIDE17-2S | GLIDE17-2SXHD | GLIDE20-2S | GLIDE20-2SXHD |
| Part # | F0091-17-2S | F0091-17-2SXHD | F0091-20-2S | F0091-20-2SXHD |
| Pad Size | 17 inch | 17 inch | 20 inch | 20 inch |
| Power Source* | 115V 50/60Hz | 115V 50/60Hz | 115V 50/60Hz | 115V 50/60Hz |
| Motor/HP | 66 Frame, 1.5 HP DC Rectified | 66 Frame, 1.5 HP DC Rectified | 66 Frame, 1.5 HP DC Rectified | 66 Frame, 1.5 HP DC Rectified |
| Amp Draw (Low / High)**** | 8.5 / 9.1 | 8.5 / 9.1 | 9.2 / 9.6 | 9.2 / 9.6 |
| Gear Box | 3-Idler 10:1 | 3-Idler 11:1 Severe Duty | 3-Idler 10:1 | 3-Idler 11:1 Severe Duty |
| Brush RPM (Low / High) | 175 / 320 | 165 / 300 | 175 / 320 | 3-Idler 11:1 |
| Cord | 50' 14-3 | 50' 12-3 | 50' 14-3 | 50' 12-3 |

W

K



Dust Pickup System
17" HP0031-DC17-WD
20" HP0031-DC20-WD



Splash Guards
17" SPLASH17-WD
20" SPLASH20-WD



Accessories for Every Application

| Model # | 17 inch | 20 inch |
|---|-------------------|-------------------|
| Pad Driver | A0010 | A0011 |
| Polish Brush | A0004 | A0005 |
| Poly Brush | A0002 | A0003 |
| Nylon Brush | A0006 | A0007 |
| Grit Brush | A0008 | A0009 |
| Polish (Hogs Hair) Pads (5 Per Case) | A0025-13P-CS | A0025-17P-CS |
| Scrub (Red)Pads (5 Per Case) | A0026-13R-CS | A0026-17R-CS |
| Strip (Black) Pads (5 Per Case) | A0027-13BK-CS | A0027-17BK-CS |
| 4-Gallon Solution Tank | 5 Standard colors | 5 Standard colors |

H

A

W

K



| Diamond Pad Driver | |
|---------------------------|----------|
| 13" | A0017DPD |
| 17" | A0010DPD |
| 20" | A0011DPD |



| Pad Driver: | |
|--------------------|-------|
| 13" | A0017 |
| 15" | A0034 |
| 17" | A0010 |
| 20" | A0011 |



| Tufted Pad Driver: | |
|---------------------------|---------|
| 17" | A0010-4 |
| 20" | A0011-3 |



| Nylon Carpet Glide Brush: | |
|----------------------------------|-------|
| 17" | A0060 |
| 20" | A0058 |



| Sand Paper Driver: | |
|---------------------------|------------|
| 13" | N/A |
| 15" | N/A |
| 17" | A0014-HD |
| 20" | A00014-1HD |



| Grit Brush: | |
|--------------------|-------|
| 13" | A0018 |
| 15" | A0038 |
| 17" | A0008 |
| 20" | A0009 |



| Poly Brush: | |
|--------------------|-------|
| 13" | A0020 |
| 15" | A0036 |
| 17" | A0002 |
| 20" | A0003 |



| Nylon Brush: | |
|---------------------|-------|
| 13" | A0016 |
| 15" | A0037 |
| 17" | A0006 |
| 20" | A0007 |



| Hawk Scrapers (Surface Prep): | |
|--------------------------------------|--------|
| 17" | HP0033 |
| 20" | HP0034 |



| Orbitec Diamond Driver: | |
|--------------------------------|--------|
| 17" | HP0017 |
| 20" | HP0020 |



| Weighted Diamond Pad Driver: | |
|-------------------------------------|------------------|
| 17" | A0010WTDPD (46#) |
| 20" | A0011WTDPD (64#) |



Hawk Merlin

Revolutionary Design that Utilizes . . .

- Floating head to ensure 100% pad contact at all times
- Quick handle/carriage removal



ELKHART, IN



(Merlin TEXHD)



(Merlin 2SXHD)

The Merlin takes advantage of innovative engineering and modern design to set new records in production and user safety. Our unique handle carriage provides 100% contact with the floor and incorporates forward movement over the traditional side to side of standard floor machine design. Scrubbing, stripping, surface preparation, and stone polishing have never been easier. When hard jobs show up, the Merlin works magic providing faster production, more consistent patterns, reduced fatigue, and the highest overall operator comfort.

Features

- | | |
|--|---|
| <ul style="list-style-type: none"> • Quick handle-carriage removal for transport and storage • Low current draw • Thumb-operated safety switch • Negative pressure on/off switch • Dual steel operating trigger for left or right-hand operation • One-piece, heavy duty, industrial, powder-coated, steel handle for optimum durability | <ul style="list-style-type: none"> • Welded frame for rugged, reliable performance • Non-marking, 2x8" ball bearing wheels • Variable position positive lock handle and vinyl grips for operator comfort and safety • 360-degree wraparound bumper -- no tools needed for replacement |
|--|---|

H

A

W

K



Technical Specifications

| | | |
|----------------------------|--|--|
| Model # | HP1517-180MER | HP1520-180MER |
| Part # | F0040-17-1.5TE | F0040-20-1.5TE |
| Pad Size | 17 inch | 20 inch |
| Power Source | 115V 60Hz | 115V 60Hz |
| Motor/HP | 180 Frame, 1.5 HP TEFC AC Dual Capacitor Motor | 180 Frame, 1.5 HP TEFC AC Dual Capacitor Motor |
| Amp Draw (Low /High)*** | 7.9 | 8.5 |
| Gear Box | 3-Idler 11:1 Severe Duty | 3-Idler 11:1 Severe Duty |
| Brush RPM (Low / High) | 165 | 165 |
| Cord*/** | 2-Piece 50' 12-3 | 2-Piece 50' 12-3 |

*230V Available *50Hz Available *** 75' Cord Available (12-3)
****100' Cord Available (12-3)

Amp Draw with Appropriate Pad Driver

dB Rating: 66 Meets GS42 Requirements
Specifications subject to change without notice.

| | | |
|----------------------------|-------------------------------------|-------------------------------------|
| Model # | HP1517-MER-2SXHD | HP1520-MER-2SXHD |
| Part # | F0040-17-1.5-2S | F0040-20-1.5-2S |
| Pad Size | 17 inch | 20 inch |
| Power Source | 115V 50/60Hz | 115V 50/60 Hz |
| Motor/HP | 66 Frame, 1.5 HP DC Rectified | 66 Frame, 1.5 HP DC Rectified |
| Amp Draw (Low /High)*** | 8.5 / 9.1 | 9.2 / 9.6 |
| Gear Box | 3-Idler 11:1 Severe Duty | 3-Idler 11:1 Severe Duty |
| Brush RPM (Low / High) | 165 / 300 | 165 / 300 |
| Cord*/** | 2-Piece 50' 12-3 | 2-Piece 50' 12-3 |

H

A

W

K



Accessories for Every Application

H



**Hawk Scrapers
(Surface Prep):**
17" HP0033
20" HP0034



**Orbitec Diamond
Driver:**
17" HP0017
20" HP0020



**Weighted Diamond
Pad Driver:**
17" A0010WTDPD (46#)
20" A0011WTDPD (64#)

A



**Diamond Pad
Driver**
17" A0010DPD
20" A0011DPD



Pad Driver:
17" A0010
20" A0011



Sand Paper Driver:
17" A0014-HD
20" A00014-1HD

W



Grit Brush:
17" A0008
20" A0009



Poly Brush:
13" A0020
15" A0036
17" A0002
20" A0003



Nylon Brush:
13" A0016
15" A0037
17" A0006
20" A0007

K



Dust Pickup System
HP0031-DC17-WD
HP0031-DC20-WD



Hawk Wingspan



H

A

W

K

Big jobs are no problem with the Wingspan 29" wide area floor machine by Hawk. Two 15" heads work in harmony to scrub, strip, or polish a 29" path quickly and effortlessly. Cut labor in half and still not break the budget with expensive automatic equipment. The Wingspan's unique design provides Forward Assist™, a first of it's kind in hand-held scrubbers. Get behind the Wingspan. It's just like flying.



Technical Specifications

| | |
|---------------|-----------------------------------|
| Model # | WingSpan-29 |
| Part # | F0061-29 |
| Pad Size | 29 inch |
| Power Source* | 115V 50/60Hz |
| Motor/HP | Dual -- 1 HP Counter Rotating |
| Gear Box | 3-Idler 11:1 Severe Duty |
| RPM | 2 @ 175 Each |
| Cord | 2 - Piece 100' 12-3 Power Cord |
| Wheels | 2X8 Inch Ball Bearing Wheels |
| Brush Cover | Black HMV Plastic Brush Cover |

Specifications subject to change without notice.

***230V Available**

Accessories for Every Application

| | |
|---|--------------------|
| Pad Driver | A0034-DUAL |
| Polish Brush | A0035-DUAL |
| Poly Brush | A0036-DUAL |
| Nylon Brush | A0037-DUAL |
| Grit Brush | A0038-DUAL |
| Polish (Hogs Hair) Pads (5 Per Case) | A0025-15P-CS |
| Scrub (Red)Pads (5 Per Case) | A0026-15R-CS |
| Strip (Black) Pads (5 Per Case) | A0027-15BK-CS |
| 6-Gallon High Capacity Solution Tank | SME0193-2BLK6-QRGF |

H

A

W

K



Hawk G2 Raptor



Using a “green” process, the G2 Raptor has the ability to remove large areas of floor finish without water or chemicals. If the operator chooses to use a more conventional approach, the amount of water and chemicals used can be reduced. This makes the process inherently safer for the operator and all personnel. This unit is also excellent for sanding, scrubbing, and light polishing. Furthermore, learning to operate the Raptor can be done in a matter of minutes.

Features

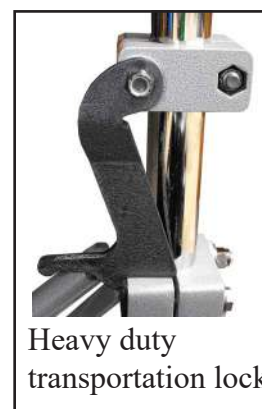
- 1.5 HP TEFC motor 180-frame 1740 RPM
- Non-marking 2x8” ball bearing wheels
- Thumb-operated safety switch
- Negative pressure on/off switch
- Dual steel operating trigger for left or right-hand operation
- Welded frame for rugged, reliable performance
- Variable position positive lock handle and vinyl grips for operator comfort and safety
- One-piece chrome, heavy duty steel handle for optimum durability

**Meets
GS42**



Technical Specifications

| | |
|---|---|
| Model # | Raptor 2014-G2 |
| Part # | F-RAP2014-G2 |
| Pad Size | 20" X 14" |
| Pad Driver Type | Combination Pad Holder/ Diamond Pad Driver |
| Power Source * | 115V 60Hz |
| Motor/HP | 1.5 HP TEFC 1740 RPM, 180 Frame |
| Amp Draw | 9.00 |
| Vibration Compensator | 2.00 Inches |
| Cord | 2-Piece 50' 12-3 (100' 12-3 Optional) |
| Pad Pressure (lbs/in ²)*** | 0.657 |
| Pad Pressure (lbs/ft ²)*** | 94.63 |
| <p>*Unit also available in 230V ***Pad pressure does not include the weight of the power cord <i>Specifications subject to change without notice.</i></p> | |



Miscellaneous Pads

| | |
|----------------------------|----------------|
| Maroon Prep | A0064-2014-CS |
| White | A0065-2014-CS |
| Red | A0066-2014-CS |
| Blue | A0067-2014-CS |
| Green | A0068-2014-CS |
| Black | A0069-2014-CS |
| Light Hoghair | A0070-2014-CS |
| Green Astro | A0072-2014-CS |
| Red Heat Screen - 80 Grit | A0074-2014-80 |
| Red Heat Screen - 100 Grit | A0074-2014-100 |
| Red Heat Screen - 120 Grit | A0074-2014-120 |
| Red Heat Screen - 150 Grit | A0074-2014-150 |
| Red Heat Screen - 180 grit | A0074-2014-180 |

All units to be operated with red backer pad.

H

A

W

K



Hawk RedTail 2014



ELKHART, IN



Revolutionary Design that Utilizes . . .

- Primary vibration isolators
- Secondary vibration isolators
- Floating head to ensure 100% pad contact at all times
- Low profile
- Quick handle/carriage removal

The RedTail 2014 Orbital Floor Machine is your surface prep go-to tool. Easy to transport, set-up, and use by any level of personnel. It's a fast and quite way to clean or prep any washable hard surface. Our unique WD detachable handle design provides 100% wheel contact for perfect control. Cleans wall to wall and deep into corners without having to bend and scrape. Green Clearings newest partner has arrived and ready to work hard for your team.

Features

- | | |
|---|--|
| <ul style="list-style-type: none"> • Twin (dual) capacitor 56-frame TEFC (totally enclosed fan cooled) motor keeps out dirt and dust for longer motor life. • Extra heavy duty spring steel cord strain relief with a 50' 14-3 power cord • Low current draw • Thumb-operated safety switch • Negative pressure on/off switch • Dual steel operating trigger for left or right-hand operation | <ul style="list-style-type: none"> • One-piece industrial powder coated heavy duty steel handle for optimum durability • Welded frame for rugged, reliable performance • Non-marking, 2x6" ball bearing wheels • Multiple position handle adjustment for operator comfort and safety • Comfortable vinyl handle grips for ease of use |
|---|--|

Meets
GS42



Technical Specifications

| | |
|--|---|
| Model # | REDTAIL2014 |
| Part # | F-REDTAIL-2014 |
| Pad Size | 20" X 14" |
| Pad Driver Type | Combination Pad Holder/Diamond Pad Driver |
| Power Source | 115V 60Hz |
| Motor/HP | 1.0 HP TEFC 1740 RPM |
| Amp Draw | 7.8 |
| Vibration Compensator | 1.25 inch |
| Cord | 50' 14-3 |
| Pad Pressure (lbs/in ²)*** | .40 |

*****Pad pressure does not include the weight of the power cord**
Specifications subject to change without notice.

Miscellaneous Pads

| | |
|----------------------------|----------------|
| Maroon Prep | A0064-2014-CS |
| White | A0065-2014-CS |
| Red | A0066-2014-CS |
| Green | A0068-2014-CS |
| Black | A0069-2014-CS |
| Light Hoghair | A0070-2014-CS |
| Green Astro | A0072-2014-CS |
| Red Heat Screen - 80 Grit | A0074-2014-80 |
| Red Heat Screen - 100 Grit | A0074-2014-100 |
| Red Heat Screen - 120 Grit | A0074-2014-120 |
| Red Heat Screen - 150 Grit | A0074-2014-150 |
| Red Heat Screen - 180 grit | A0074-2014-180 |

All units to be operated with red backer pad.

H

A

W

K



TigerHawk 1410



ELKHART, IN

Revolutionary Design that Utilizes . . .

- Primary vibration isolators
- Secondary vibration isolators
- Floating head to ensure 100% pad contact at all times



(Shown with dust skirt installed)

The TigerHawk 1410's revolutionary rectangular, floating head design allows the operator to easily maneuver the unit with less fatigue than the normal oscillating units available in today's market. It also enables access to corners while standing, unlike conventional floor machines.

Using a "green" process, the TigerHawk 1410 has the ability to remove floor finish without water or chemicals. If the operator chooses to use a more conventional approach, the amount of water and chemicals used can be reduced. This makes the process inherently safer for the operator and all personnel. This unit is also excellent for sanding, scrubbing, and light polishing. Furthermore, learning to operate the TigerHawk 1410 can be done in a matter of minutes.

H

A

W

K



H

A

W

K

Features

- Start/Run capacitor .5 HP TEFC (totally enclosed fan cooled) motor keeps out dirt and dust for longer motor life.
- Extra heavy duty spring steel cord strain relief with a 50' 14-3 power cord
- Low current draw
- Thumb-operated safety switch
- Negative pressure on/off switch
- Dual steel operating trigger for left or right-hand operation
- One-piece industrial powder coated heavy duty steel handle for optimum durability
- Welded frame for rugged, reliable performance
- Non-marking, 5" ball bearing wheels
- Multiple position handle adjustment for operator comfort and safety
- Comfort style vinyl handle grips for ease of use
- Full wraparound dust skirt

Technical Specifications

| | |
|---|---|
| Model # | TH-1410 |
| Part # | F-TIGER1410 |
| Pad Size | 14" X 10" |
| Pad Driver Type | Combination Pad Holder/Diamond Pad Driver |
| Power Source * | 115V 60Hz |
| Motor/HP | .5 HP TEFC 1725 RPM |
| Amp Draw | 8.3 |
| Vibration Isolators | Primary and Secondary |
| Cord | 50' 14-3 |
| Pad Pressure (lbs/in ²)*** | .57 |
| Pad Pressure (lbs/ft ²)*** | 81.26 |
| <p>*Unit also available in 230V, and 50 Hz ***Pad pressure does not include the weight of the power cord. <i>Specifications subject to change without notice.</i></p> | |

Miscellaneous Pads

| | |
|----------------------------|----------------|
| Maroon Prep | A0064-1410-CS |
| White | A0065-1410-CS |
| Red | A0066-1410-CS |
| Blue | A0067-1410-CS |
| Green | A0068-1410-CS |
| Black | A0069-1410-CS |
| Light Hoghair | A0070-1410-CS |
| Green Astro | A0072-1410-CS |
| Red Heat Screen - 80 Grit | A0074-1410-80 |
| Red Heat Screen - 100 Grit | A0074-1410-100 |
| Red Heat Screen - 120 Grit | A0074-1410-120 |
| Red Heat Screen - 150 Grit | A0074-1410-150 |
| Red Heat Screen - 180 Grit | A0074-1410-180 |

All units to be operated with red backer pad.

TigerHawk 2014 / 2814



H

A

W

K

Meets
GS42

Revolutionary Design that Utilizes . . .

- Primary vibration isolators
- Secondary vibration isolators
- Floating head to ensure 100% pad contact at all times
- Low profile
- Quick handle/carriage removal



ELKHART, IN



TigerHawk 2014

TigerHawk 2814

The TigerHawk 2014 and TigerHawk 2814's revolutionary rectangular, floating head design allows the operator to easily maneuver the unit with less fatigue than the normal oscillating units available on today's market. It also enables access to corners while standing, unlike conventional floor machines. By utilization of the optional spray system or active vacuum system, the TigerHawk achieves functionality beyond the existing comparable units in the industry.

Using a "green" process, the TigerHawk 2014 and the TigerHawk 2814 have the ability to remove large areas of floor finish without water or chemicals. If the operator chooses to use a more conventional approach, the amount of water and chemicals used can be reduced. This makes the process inherently safer for the operator and all personnel. This unit is also excellent for sanding, scrubbing, and light polishing. Furthermore, learning to operate either TigerHawk can be done in a matter of minutes.



H

A

W

K

Features

- Twin (dual) capacitor 180-frame TEFC (totally enclosed fan cooled) motor keeps out dirt and dust for longer motor life.
- Extra heavy duty spring steel cord strain relief with a 2-piece, 12-3 power cord
- Low current draw
- Thumb-operated safety switch
- Negative pressure on/off switch
- Dual steel operating trigger for left or right-hand operation
- One-piece industrial powder coated heavy duty steel handle for optimum durability
- Welded frame for rugged, reliable performance
- Non-marking, 2x8" ball bearing wheels
- Multiple position handle adjustment for operator comfort and safety
- Comfortable vinyl handle grips for ease of use
- Full wraparound dust skirt



Optional integrated vacuum system



Transport cart that comes with each unit



Optional spray system



Option gravity water feed system

Miscellaneous Pads

| | | |
|----------------------------|----------------|----------------|
| Maroon Prep | A0064-2014-CS | A0064-2814-CS |
| White | A0065-2014-CS | A0065-2814-CS |
| Red | A0066-2014-CS | A0066-2814-CS |
| Blue | A0067-2014-CS | A0067-2814-CS |
| Green | A0068-2014-CS | A0068-2814-CS |
| Black | A0069-2014-CS | A0069-2814-CS |
| Light Hoghair | A0070-2014-CS | A0070-2814-CS |
| Green Astro | A0072-2014-CS | A0072-2814-CS |
| Red Heat Screen - 80 Grit | A0074-2014-80 | A0074-2814-80 |
| Red Heat Screen - 100 Grit | A0074-2014-100 | A0074-2814-100 |
| Red Heat Screen - 120 Grit | A0074-2014-120 | A0074-2814-120 |
| Red Heat Screen - 150Grit | A0074-2014-150 | A0074-2814-150 |
| Red Heat Screen - 180 Grit | A0074-2014-180 | A0074-2814-180 |

All units to be operated with red backer pad.



Technical Specifications

| Model # | TH-2014 | TH-2014-GF | TH-2014-SP | TH-2014-V |
|--|---|---|---|---|
| Part # | F-TIGER2014 | F-TIGER2014-GF | F-TIGER2014-SP | F-TIGER2014-V |
| Pad Size | 20" X 14" | 20" X 14" | 20" X 14" | 20" X 14" |
| Pad Driver Type | Combination Pad Holder/Diamond Pad Driver | Combination Pad Holder/Diamond Pad Driver | Combination Pad Holder/Diamond Pad Driver | Combination Pad Holder/Diamond Pad Driver |
| Power Source * | 115V 60Hz | 115V 60Hz | 115V 60Hz | 115V 60Hz |
| Motor/HP | 1.5 HP TEFC 1740 RPM, 180 Frame | 1.5 HP TEFC 1740 RPM, 180 Frame | 1.5 HP TEFC 1740 RPM, 180 Frame | 1.5 HP TEFC 1740 RPM, 180 Frame |
| Spray System | N/A | N/A | Yes | N/A |
| Active Vacuum | N/A | N/A | N/A | Yes |
| Amp Draw | 7.8 | 7.8 | 7.8 | 7.8 |
| Vibration Compensator | 1.25 Inches | 1.25 Inches | 1.25 Inches | 1.25 Inches |
| Cord | 2-Piece 50' 12-3 | 2-Piece 50' 12-3 | 2-Piece 50' 12-3 | 2-Piece 50' 12-3 |
| Pad Pressure (lbs/in ²)*** | .71 | .71 | .72 | .71 |

| Model # | TH-2814 | TH-2814-GF | TH-2814-SP | TH-2814-V |
|--|---|---|---|---|
| Part # | F-TIGER2814 | F-TIGER2814-GF | F-TIGER2814-SP | F-TIGER2814-V |
| Pad Size | 28" X 14" | 28" X 14" | 28" X 14" | 28" X 14" |
| Pad Driver Type | Combination Pad Holder/Diamond Pad Driver | Combination Pad Holder/Diamond Pad Driver | Combination Pad Holder/Diamond Pad Driver | Combination Pad Holder/Diamond Pad Driver |
| Power Source * | 115V 60Hz | 115V 60Hz | 115V 60Hz | 115V 60Hz |
| Motor/HP | 1.5 HP TEFC 1740 RPM, 180 Frame | 1.5 HP TEFC 1740 RPM, 180 Frame | 1.5 HP TEFC 1740 RPM, 180 Frame | 1.5 HP TEFC 1740 RPM, 180 Frame |
| Spray System | N/A | N/A | Yes | N/A |
| Active Vacuum | N/A | N/A | N/A | Yes |
| Amp Draw | 7.8 | 7.8 | 7.8 | 7.8 |
| Vibration \ Compensator | 1.25 Inches | 1.25 Inches | 1.25 Inches | 1.25 Inches |
| Cord | 2-Piece 50' 12-3 | 2-Piece 50' 12-3 | 2-Piece 50' 12-3 | 2-Piece 50' 12-3 |
| Pad Pressure (lbs/in ²)*** | .65 | .65 | .66 | .65 |

***Unit also available in 230V**

****Weight is calculated without the power cord**

*****Pad pressure does not include the weight of the power cord.**

Specifications subject to change without notice.

H

A

W

K



Hawk High-Speed Burnishers



These 13", 15", 17", or 20" super-quiet, high-speed burnishers are available with or without dust control (17 inch and 20 inch only) in 1500, 1800, or 2000 RPM speeds. Remarkably easy to handle, they are the perfect choice for all areas.

Features

- Flexible pad holder
- Non-marking, 5" ball bearing wheels
- Pad centering clamp
- UL/CUL approved (1500 RPM)
- Thumb-operated safety switch
- Negative pressure on/off switch
- Dual steel operating trigger for left or right-hand operation
- One-piece chrome, heavy duty steel handle for optimum durability
- Welded frame for rugged, reliable performance
- Variable position positive lock handle and vinyl grips for operator comfort and safety
- 360-degree wraparound bumper -- no tools needed for replacement



UL/CUL Approved
Machine



Technical Specifications

| Model # | HP1513-HSB | HP1515-HSB | HP1517-HSB | HP1517-HSBDC | HP1520-HSB | HP1520-HS-BDC |
|---------------|----------------------------------|----------------------------------|----------------------------------|----------------------------------|----------------------------------|----------------------------------|
| Part # | F1500-13 | F1500-15 | F1500-17 | F1500-17DC | F1500-20 | F1500-20DC |
| Pad Size | 13 inch | 15 inch | 17 inch | 16 inch | 20 inch | 19 inch |
| Power Source* | 115V 50/60Hz | 115V 50/60Hz | 115V 50/60Hz | 115V 50/60Hz | 115V 50/60Hz | 115V 50/60Hz |
| Motor/HP | 66 Frame, 1.5 HP DC Rectified | 66 Frame, 1.5 HP DC Rectified | 66 Frame, 1.5 HP DC Rectified | 66 Frame, 1.5 HP DC Rectified | 66 Frame, 1.5 HP DC Rectified | 66 Frame, 1.5 HP DC Rectified |
| Amp Draw | 9.1 | 9.6 | 13.0 | 12.2 | 13.8 | 13.1 |
| Belt Drive | Multi-V Belt Drive | Multi-V Belt Drive | Multi-V Belt Drive | Multi-V Belt Drive | Multi-V Belt Drive | Multi-V Belt Drive |
| Pad RPM | 1500 | 1500 | 1500 | 1500 | 1500 | 1500 |
| Cord**/** | 50' 14-3 | 50' 14-3 | 50' 14-3 | 50' 14-3 | 50' 14-3 | 50' 14-3 |
| Dust Control | No | No | No | Yes | No | Yes |

*230V Available ** 75' Cord Available (12-3) ***100' Cord Available (12-3)

dB Rating: Standard Unit - 69 Dust Control Unit - 62
Meets GS42 Requirements
Specifications subject to change without notice.

| Model # | HP1513-1800 | HP1515-1800 | HP1517-1800 | HP1517-1800DC | HP1520-1800 | HP1520-1800DC |
|---------------|----------------------------------|----------------------------------|----------------------------------|----------------------------------|----------------------------------|----------------------------------|
| Part # | F1800-13 | F1800-15 | F1800-17 | F1800-17DC | F1800-20 | F1800-20DC |
| Pad Size | 13 inch | 15 inch | 17 inch | 16 inch | 20 inch | 19 inch |
| Power Source* | 115V 50/60Hz | 115V 50/60Hz | 115V 50/60Hz | 115V 50/60Hz | 115V 50/60Hz | 115V 50/60Hz |
| Motor/HP | 66 Frame, 1.5 HP DC Rectified | 66 Frame, 1.5 HP DC Rectified | 66 Frame, 1.5 HP DC Rectified | 66 Frame, 1.5 HP DC Rectified | 66 Frame, 1.5 HP DC Rectified | 66 Frame, 1.5 HP DC Rectified |
| Amp Draw | 9.5 | 9.9 | 13.9 | 13.2 | 14.6 | 13.6 |
| Belt Drive | Multi-V Belt Drive | Multi-V Belt Drive | Multi-V Belt Drive | Multi-V Belt Drive | Multi-V Belt Drive | Multi-V Belt Drive |
| Pad RPM | 1800 | 1800 | 1800 | 1800 | 1800 | 1800 |
| Cord**/** | 50' 14-3 | 50' 14-3 | 50' 14-3 | 50' 14-3 | 50' 14-3 | 50' 14-3 |
| Dust Control | No | No | No | Yes | No | Yes |

H

A

W

K



Technical Specifications (continued)

| Model # | HP1513-2M | HP1515-2M | HP1517-2M | HP1517-2MDC | HP1520-2M | HP1520-2MDC |
|---------------|-------------------------------------|-------------------------------------|-------------------------------------|-------------------------------------|-------------------------------------|-------------------------------------|
| Part # | F2000-13 | F2000-15 | F2000-17 | F2000-17DC | F2000-20 | F2000-20DC |
| Pad Size | 13 inch | 15 inch | 17 inch | 16 inch | 20 inch | 19 inch |
| Power Source* | 115V 50/60Hz | 115V 50/60Hz | 115V 50/60Hz | 115V 50/60Hz | 115V 50/60Hz | 115V 50/60Hz |
| Motor/HP | 66 Frame, 1.5 HP DC Rectified | 66 Frame, 1.5 HP DC Rectified | 66 Frame, 1.5 HP DC Rectified | 66 Frame, 1.5 HP DC Rectified | 66 Frame, 1.5 HP DC Rectified | 66 Frame, 1.5 HP DC Rectified |
| Amp Draw | 10 | 10.8 | 14.9 | 13.9 | 16.4 | 14.8 |
| Belt Drive | Multi-V Belt Drive | Multi-V Belt Drive | Multi-V Belt Drive | Multi-V Belt Drive | Multi-V Belt Drive | Multi-V Belt Drive |
| Pad RPM | 2000 | 2000 | 2000 | 2000 | 2000 | 2000 |
| Cord**/** | 50' 14-3 | 50' 14-3 | 50' 14-3 | 50' 14-3 | 50' 14-3 | 50' 14-3 |
| Dust Control | No | No | No | Yes | No | Yes |

*230V Available ** 75' Cord Available (12-3) ***100' Cord Available (12-3)

Machine shown below with optional dust control system.
Installation from factory only.



Dust filter (HPA0029-2) is easy to remove for cleaning or replacement.

Optional Dust Pick-Up System



H

A

W

K



Hawk AC High-Speed Burnishers



ELKHART, IN



These 13", 15", 17", or 20", super-quiet high-speed burnishers are available with or without dust control in 1000 and 1500 (not available in 20 inch) RPM. Remarkably easy to handle, they are the perfect choice for all areas.

Features

- | | |
|--|--|
| <ul style="list-style-type: none"> • 1.5 HP TEFC (totally enclosed fan cooled) motor • Flexible pad holder • Non-marking, 5" ball bearing wheels • Pad centering clamp • Thumb-operated safety switch • Negative pressure on/off switch • Dual steel operating trigger for left or right-hand operation | <ul style="list-style-type: none"> • One-piece chrome, heavy duty steel handle for optimum durability • Welded frame for rugged, reliable performance • Variable position positive lock handle and vinyl grips for operator comfort and safety • 360-degree wraparound bumper -- no tools needed for replacement |
|--|--|

H

A

W

K



Technical Specifications

| | | | | | | |
|---------------|--|--|--|--|--|--|
| Model # | HP1513-1000 | HP1515-1000 | HP1517-1000 | HP1517-1000DC | HP1520-1000 | HP1520-1000DC |
| Part # | F1000-13TE | F1000-15TE | F1000-17TE | F1000-17TEDC | F1000-20TE | F1000-20TEDC |
| Pad Size | 13 inch | 15 inch | 17 inch | 16 inch | 20 inch | 19 inch |
| Power Source* | 115V 60Hz | 115V 60Hz | 115V 60Hz | 115V 60Hz | 115V 60Hz | 115V 60Hz |
| Motor/HP | 56 Frame, 1.5 HP AC TEFC, Dual Capacitor | 56 Frame, 1.5 HP AC TEFC, Dual Capacitor | 56 Frame, 1.5 HP AC TEFC, Dual Capacitor | 56 Frame, 1.5 HP AC TEFC, Dual Capacitor | 56 Frame, 1.5 HP AC TEFC, Dual Capacitor | 56 Frame, 1.5 HP AC TEFC, Dual Capacitor |
| Amp Draw | 10 | 11.2 | 12.4 | 11.6 | 13.5 | 12.4 |
| Belt Drive | Multi-V Belt | Multi-V Belt | Multi-V Belt | Multi-V Belt | Multi-V Belt | Multi-V Belt |
| Pad RPM | 1000 | 1000 | 1000 | 1000 | 1000 | 1000 |
| Cord**/** | 50' 14-3 | 50' 14-3 | 50' 14-3 | 50' 14-3 | 50' 14-3 | 50' 14-3 |
| Dust Control | No | No | No | Yes | No | Yes |

*230V Available *50Hz Available *** 75' Cord Available (12-3)
 **** 100' Cord Available (12-3)

dB Rating: Standard Unit - 58 Dust Control Unit - 53
 Meets GS42 Requirements
Specifications subject to change without notice.

| | | | | |
|---------------|--|--|--|--|
| Model # | HP1513-1500 | HP1515-1500 | HP1517-1500 | HP1517-1500DC |
| Part # | F1500-13TE | F1500-15TE | F1500-17TE | F1500-17TEDC |
| Pad Size | 13 inch | 15 inch | 17 inch | 16 inch |
| Power Source* | 115V 60Hz | 115V 60Hz | 115V 60Hz | 115V 60Hz |
| Motor/HP | 56 Frame, 1.5 HP AC TEFC, Dual Capacitor | 56 Frame, 1.5 HP AC TEFC, Dual Capacitor | 56 Frame, 1.5 HP AC TEFC, Dual Capacitor | 56 Frame, 1.5 HP AC TEFC, Dual Capacitor |
| Amp Draw | 10.3 | 11.7 | 13 | 12.3 |
| Belt Drive | Multi-V Belt | Multi-V Belt | Multi-V Belt | Multi-V Belt |
| Pad RPM | 1500 | 1500 | 1500 | 1500 |
| Cord**/** | 50' 14-3 | 50' 14-3 | 50' 14-3 | 50' 14-3 |
| Dust Control | No | No | No | Yes |

H

A

W

K



Hawk 2-Speed Burnishers



These 13", 15", 17", or 20" super-quiet, 2-speed burnishers are available with or without dust control in 750/1500 or 900/1800 RPM. Remarkably easy to handle, they are the perfect choice for all areas.

Features

- | | |
|---|--|
| <ul style="list-style-type: none"> • DC rectified motor assures smooth running operation • Flexible pad holder • Non-marking, 5" ball bearing wheels • Pad centering clamp • Placement of the 2-speed control switch optimizes operating ease. • Thumb-operated safety switch • Negative pressure on/off switch • Dual steel operating trigger for left or right-hand operation | <ul style="list-style-type: none"> • One-piece chrome, heavy duty steel handle for optimum durability • Welded frame for rugged, reliable performance • Variable position positive lock handle and vinyl grips for operator comfort and safety • 360-degree wraparound bumper -- no tools needed for replacement |
|---|--|

H

A

W

K

Technical Specifications



H

A

W

K

| | | | | | | |
|-----------------------|-------------------------------------|-------------------------------------|-------------------------------------|-------------------------------------|-------------------------------------|-------------------------------------|
| Model # | HP1513-07515 | HP1515-07515 | HP1517-07515 | HP1517-07515DC | HP1520-07515 | HP1520-07515DC |
| Part # | F0075-13 | F0075-15 | F0075-17 | F0075-17DC | F0075-20 | F0075-20DC |
| Pad Size | 13 inch | 15 inch | 17 inch | 16 inch | 20 inch | 19 inch |
| Power Source* | 115V 50/60Hz | 115V 50/60Hz | 115V 50/60Hz | 115V 50/60Hz | 115V 50/60Hz | 115V 50/60Hz |
| Motor/HP | 66 Frame, 1.5 HP DC Rectified | 66 Frame, 1.5 HP DC Rectified | 66 Frame, 1.5 HP DC Rectified | 66 Frame, 1.5 HP DC Rectified | 66 Frame, 1.5 HP DC Rectified | 66 Frame, 1.5 HP DC Rectified |
| Amp Draw (Low / High) | 8.7 / 9.1 | 8.9 / 9.6 | 10.3 / 13.0 | 10.1 / 12.2 | 12.2 / 13.8 | 12 / 13.1 |
| Belt Drive | Multi-V Belt | Multi-V Belt | Multi-V Belt | Multi-V Belt | Multi-V Belt | Multi-V Belt |
| Pad RPM (Low / High) | 750 / 1500 | 750 / 1500 | 750 / 1500 | 750 / 1500 | 750 / 1500 | 750 / 1500 |
| Cord**/** | 50' 14-3 | 50' 14-3 | 50' 14-3 | 50' 14-3 | 50' 14-3 | 50' 14-3 |
| Dust Control | No | No | No | Yes | No | Yes |

*230V Available ** 75' Cord Available (12-3) ***100' Cord Available (12-3)

dB Rating: Standard Unit High - 69 Dust Control Unit High - 62
 Standard Unit Low - 62 Dust Control Unit Low - 55
 Meets GS42 Requirements
 Specifications subject to change without notice.

| | | | | | | |
|-----------------------|-------------------------------------|-------------------------------------|-------------------------------------|-------------------------------------|-------------------------------------|-------------------------------------|
| Model # | HP1513-0918 | HP1515-0918 | HP1517-0918 | HP1517-0918DC | HP1520-0918 | HP1520-0918DC |
| Part # | F0090-13 | F0090-15 | F0090-17 | F0090-17DC | F0090-20 | F0090-20DC |
| Pad Size | 13 inch | 15 inch | 17 inch | 16 inch | 20 inch | 19 inch |
| Power Source | 115V 50/60Hz | 115V 50/60Hz | 115V 50/60Hz | 115V 50/60Hz | 115V 50/60Hz | 115V 50/60Hz |
| Motor/HP | 66 Frame, 1.5 HP DC Rectified | 66 Frame, 1.5 HP DC Rectified | 66 Frame, 1.5 HP DC Rectified | 66 Frame, 1.5 HP DC Rectified | 66 Frame, 1.5 HP DC Rectified | 66 Frame, 1.5 HP DC Rectified |
| Amp Draw (Low / High) | 8.9 / 9.5 | 9.3 / 9.9 | 13.2 / 13.9 | 12.8 / 13.2 | 13.1 / 14.6 | 13 / 13.6 |
| Belt Drive | Multi-V Belt | Multi-V Belt | Multi-V Belt | Multi-V Belt | Multi-V Belt | Multi-V Belt |
| Pad RPM (Low / High) | 900 / 1800 | 900 / 1800 | 900 / 1800 | 900 / 1800 | 900 / 1800 | 900 / 1800 |
| Cord** | 50' 14-3 | 50' 14-3 | 50' 14-3 | 50' 14-3 | 50' 14-3 | 50' 14-3 |
| Dust Control | No | No | No | Yes | No | Yes |



Hawk Fold-Up High-Speed Burnishers



ELKHART, IN



These fold-up models are available in 1500, 1800, or 2000 RPM speeds to cover every need. These highly maneuverable burnishers are well suited when space is limited. The fold-up feature allows storage using minimal space and is available in 13", 15", 17", or 20" units.

Features

- | | |
|---|---|
| <ul style="list-style-type: none"> • DC rectified motor assures smooth running operation • Minimal storage space • Flexible pad holder • Non-marking, 5" ball bearing wheels • Pad centering clamp • Thumb-operated safety switch • Negative pressure on/off switch • Dual steel operating trigger for left or right-hand operation | <ul style="list-style-type: none"> • Welded, heavy gauge, industrial powder coated, steel handle • Welded frame for rugged, reliable performance • Variable position positive lock handle and vinyl grips for operator comfort and safety • 360-degree wraparound bumper -- no tools needed for replacement |
|---|---|

H

A

W

K



Technical Specifications

| | | | | | | |
|---------------|-------------------------------------|-------------------------------------|-------------------------------------|-------------------------------------|-------------------------------------|-------------------------------------|
| Model # | HCF1513-1500 | HCF1515-1500 | HCF1517-1500 | HCF1517-1500DC | HCF1520-1500 | HCF1520-1500DC |
| Part # | F1500-13CF | F1500-15CF | F1500-17CF | F1500-17CFDC | F1500-20CF | F1500-20CFDC |
| Pad Size | 13 inch | 15 inch | 17 inch | 16 inch | 20 inch | 19 inch |
| Power Source* | 115V 50/60Hz | 115V 50/60Hz | 115V 50/60Hz | 115V 50/60Hz | 115V 50/60Hz | 115V 50/60Hz |
| Motor/HP | 66 Frame, 1.5 HP DC Rectified | 66 Frame, 1.5 HP DC Rectified | 66 Frame, 1.5 HP DC Rectified | 66 Frame, 1.5 HP DC Rectified | 66 Frame, 1.5 HP DC Rectified | 66 Frame, 1.5 HP DC Rectified |
| Amp Draw | 11.4 | 11.9 | 12.6 | 9.8 | 13.2 | 10.2 |
| Belt Drive | Multi-V Belt Drive | Multi-V Belt Drive | Multi-V Belt Drive | Multi-V Belt Drive | Multi-V Belt Drive | Multi-V Belt Drive |
| Pad RPM | 1500 | 1500 | 1500 | 1500 | 1500 | 1500 |
| Cord**/** | 50' 14-3 | 50' 14-3 | 50' 14-3 | 50' 14-3 | 50' 14-3 | 50' 14-3 |
| Dust Control | No | No | No | Yes | No | Yes |

*230V Available ** 75' Cord Available (12-3) ***100' Cord Available (12-3)

| | | | | | | |
|---------------|-------------------------------------|-------------------------------------|-------------------------------------|-------------------------------------|-------------------------------------|-------------------------------------|
| Model # | HCF1513-1800 | HCF1515-1800 | HCF1517-1800 | HCF1517-1800DC | HCF1520-1800 | HCF1520-1800DC |
| Part # | F1800-13CF | F1800-15CF | F1800-17CF | F1800-17CFDC | F1800-20CF | F1800-20CFDC |
| Pad Size | 13 inch | 15 inch | 17 inch | 16 inch | 20 inch | 19 inch |
| Power Source* | 115V 50/60Hz | 115V 50/60Hz | 115V 50/60Hz | 115V 50/60Hz | 115V 50/60Hz | 115V 50/60Hz |
| Motor/HP | 66 Frame, 1.5 HP DC Rectified | 66 Frame, 1.5 HP DC Rectified | 66 Frame, 1.5 HP DC Rectified | 66 Frame, 1.5 HP DC Rectified | 66 Frame, 1.5 HP DC Rectified | 66 Frame, 1.5 HP DC Rectified |
| Amp Draw | 11.7 | 12.3 | 13.2 | 10.1 | 13.9 | 10.7 |
| Belt Drive | Multi-V Belt Drive | Multi-V Belt Drive | Multi-V Belt Drive | Multi-V Belt Drive | Multi-V Belt Drive | Multi-V Belt Drive |
| Pad RPM | 1800 | 1800 | 1800 | 1800 | 1800 | 1800 |
| Cord**/** | 50' 14-3 | 50' 14-3 | 50' 14-3 | 50' 14-3 | 50' 14-3 | 50' 14-3 |
| Dust Control | No | No | No | Yes | No | Yes |

H

A

W

K



Technical Specifications (continued)

| | | | | | | |
|---------------|-------------------------------------|-------------------------------------|-------------------------------------|-------------------------------------|-------------------------------------|-------------------------------------|
| Model # | HCF1513-2000 | HCF1515-2000 | HCF1517-2000 | HCF1517-2000DC | HCF1520-2000 | HCF1520-2000DC |
| Part # | F2000-13CF | F2000-15CF | F2000-17CF | F2000-17CFDC | F2000-20CF | F2000-20CFDC |
| Pad Size | 13 inch | 15 inch | 17 inch | 16 inch | 20 inch | 19 inch |
| Power Source* | 115V 50/60Hz | 115V 50/60Hz | 115V 50/60Hz | 115V 50/60Hz | 115V 50/60Hz | 115V 50/60Hz |
| Motor/HP | 66 Frame, 1.5 HP DC Rectified | 66 Frame, 1.5 HP DC Rectified | 66 Frame, 1.5 HP DC Rectified | 66 Frame, 1.5 HP DC Rectified | 66 Frame, 1.5 HP DC Rectified | 66 Frame, 1.5 HP DC Rectified |
| Amp Draw | 11.8 | 12.4 | 13.8 | 11.1 | 14.8 | 11.8 |
| Belt Drive | Multi-V Belt Drive | Multi-V Belt Drive | Multi-V Belt Drive | Multi-V Belt Drive | Multi-V Belt Drive | Multi-V Belt Drive |
| Pad RPM | 2000 | 2000 | 2000 | 2000 | 2000 | 2000 |
| Cord**/** | 50' 14-3 | 50' 14-3 | 50' 14-3 | 50' 14-3 | 50' 14-3 | 50' 14-3 |
| Dust Control | No | No | No | Yes | No | Yes |

*230V Available ** 75' Cord Available (12-3) ***100' Cord Available (12-3)

dB Rating: Standard Unit - 69 Dust Control Unit - 62
 Meets GS42 Requirements
Specifications subject to change without notice.

Machine shown below with optional dust control system. Installation from factory only.

Dust filter (HPA0029-2) is easy to remove for cleaning or replacement.

Shown with optional splash guard

H

A

W

K



Hawk 2-Speed Fold-Up High-Speed Burnishers



ELKHART, IN



These 2-speed, fold-up burnishers are available in 750/1500 and 900/1800 RPM to cover every need. These highly maneuverable burnishers are well suited when space is limited. The fold-up feature allows storage using minimal space and is available in 13", 15", 17", or 20" units.

Features

- | | |
|---|--|
| <ul style="list-style-type: none"> • Minimal storage space • DC rectified motor assures smooth running operation • Flexible pad holder • Non-marking, 5" ball bearing wheels • Pad centering clamp • Placement of the 2-speed control switch optimizes operating ease. • Thumb-operated safety switch • Negative pressure on/off switch | <ul style="list-style-type: none"> • Dual steel operating trigger for left or right-hand operation • Welded, heavy gauge, industrial powder coated, steel handle • Welded frame for rugged, reliable performance • Variable position positive lock handle and vinyl grips for operator comfort and safety • 360-degree wraparound bumper -- no tools needed for replacement |
|---|--|

H

A

W

K

Technical Specifications



H

A

W

K

| | | | | | | |
|---------------------|-------------------------------------|-------------------------------------|-------------------------------------|-------------------------------------|-------------------------------------|-------------------------------------|
| Model # | HCF1513-07515 | HCF1515-07515 | HCF1517-07515 | HCF1517-07515DC | HCF1520-07515 | HCF1520-07515DC |
| Part # | F0075-13CF | F0075-15CF | F0075-17CF | F0075-17CFDC | F0075-20CF | F0075-20CFDC |
| Pad Size | 13 inch | 15 inch | 17 inch | 16 inch | 20 inch | 19 inch |
| Power Source* | 115V 50/60Hz | 115V 50/60Hz | 115V 50/60Hz | 115V 50/60Hz | 115V 50/60Hz | 115V 50/60Hz |
| Motor/HP | 66 Frame, 1.5 HP DC Rectified | 66 Frame, 1.5 HP DC Rectified | 66 Frame, 1.5 HP DC Rectified | 66 Frame, 1.5 HP DC Rectified | 66 Frame, 1.5 HP DC Rectified | 66 Frame, 1.5 HP DC Rectified |
| Amp Draw (Low/High) | 11.1 / 11.4 | 11.7 / 11.9 | 12.1 / 12.6 | 9.6 / 9.8 | 12.8 / 13.2 | 10 / 10.2 |
| Belt Drive | Multi-V Belt | Multi-V Belt | Multi-V Belt | Multi-V Belt | Multi-V Belt | Multi-V Belt |
| Pad RPM (Low/High) | 750 / 1500 | 750 / 1500 | 750 / 1500 | 750 / 1500 | 750 / 1500 | 750 / 1500 |
| Cord**/** | 50' 14-3 | 50' 14-3 | 50' 14-3 | 50' 14-3 | 50' 14-3 | 50' 14-3 |
| Dust Control | No | No | No | Yes | No | Yes |

*230V Available ** 75' Cord Available (12-3) ***100' Cord Available (12-3)

| | | | | | | |
|---------------------|-------------------------------------|-------------------------------------|-------------------------------------|-------------------------------------|-------------------------------------|-------------------------------------|
| Model # | HCF1513-0918 | HCF1515-0918 | HCF1517-0918 | HCF1517-0918DC | HP1520-0918 | HCF1520-0918DC |
| Part # | F0090-13CF | F0090-15CF | F0090-17CF | F0090-17CFDC | F0090-20CF | F0090-20CFDC |
| Pad Size | 13 inch | 15 inch | 17 inch | 16 inch | 20 inch | 19 inch |
| Power Source* | 115V 50/60Hz | 115V 50/60Hz | 115V 50/60Hz | 115V 50/60Hz | 115V 50/60Hz | 115V 50/60Hz |
| Motor/HP | 66 Frame, 1.5 HP DC Rectified | 66 Frame, 1.5 HP DC Rectified | 66 Frame, 1.5 HP DC Rectified | 66 Frame, 1.5 HP DC Rectified | 66 Frame, 1.5 HP DC Rectified | 66 Frame, 1.5 HP DC Rectified |
| Amp Draw (Low/High) | 11.6 / 11.7 | 12 / 12.3 | 12.9 / 13.2 | 9.8 / 10.1 | 13.2 / 13.9 | 10.4 / 10.7 |
| Belt Drive | Multi-V Belt | Multi-V Belt | Multi-V Belt | Multi-V Belt | Multi-V Belt | Multi-V Belt |
| Pad RPM (Low/High) | 900 / 1800 | 900 / 1800 | 900 / 1800 | 900 / 1800 | 900 / 1800 | 900 / 1800 |
| Cord**/** | 50' 14-3 | 50' 14-3 | 50' 14-3 | 50' 14-3 | 50' 14-3 | 50' 14-3 |
| Dust Control | No | No | No | Yes | No | Yes |

Machine shown below with optional dust control system. Installation from factory only.



Dust filter (HPA0029-2) is easy to remove for cleaning or replacement.

dB Rating: Standard Unit High - 69
 Dust Control Unit High - 62
 Standard Unit Low - 62
 Dust Control Unit Low - 55

Meets GS42 Requirements
Specifications subject to change without notice.



Hawk Fold-Up AC High-Speed Burnishers



ELKHART, IN



These 13", 15", 17", and 20" super-quiet, fold-up, high-speed burnishers are available with or without dust control in 1000 and 1500 (not available in 20 inch) RPM. Remarkably easy to handle, they are the perfect choice for all areas.

Features

- 1.5 HP TEFC (totally enclosed fan cooled) motor
- Flexible pad holder
- Non-marking, 5" ball bearing wheels
- Pad centering clamp
- Thumb-operated safety switch
- Negative pressure on/off switch
- Dual steel operating trigger for left or right-hand operation
- Welded, heavy gauge, industrial powder coated, steel handle
- Welded frame for rugged, reliable performance
- Variable position positive lock handle and vinyl grips for operator comfort and safety
- 360-degree wraparound bumper -- no tools needed for replacement

H

A

W

K

Technical Specifications



H

A

W

K

| | | | | | | |
|---------------|--|--|--|--|--|--|
| Model # | HCF1513-1000TE | HCF1515-1000TE | HCF1517-1000TE | HCF1517-1000TEDC | HCF1520-1000TE | HCF1520-1000TEDC |
| Part # | F1000-13TECF | F1000-15CF | F1000-17CF | F1000-17CFDC | F1000-20CF | F1000-TECFDC |
| Pad Size | 13 inch | 15 inch | 17 inch | 16 inch | 20 inch | 19 inch |
| Power Source* | 115V 60Hz | 115V 60Hz | 115V 60Hz | 115V 60Hz | 115V 60Hz | 115V 60Hz |
| Motor/HP | 56 Frame, 1.5 HP AC TEFC, Dual Capacitor | 56 Frame, 1.5 HP AC TEFC, Dual Capacitor | 56 Frame, 1.5 HP AC TEFC, Dual Capacitor | 56 Frame, 1.5 HP AC TEFC, Dual Capacitor | 56 Frame, 1.5 HP AC TEFC, Dual Capacitor | 56 Frame, 1.5 HP AC TEFC, Dual Capacitor |
| Amp Draw | 10 | 11.2 | 12.4 | 11.6 | 13.5 | 12.4 |
| Belt Drive | Multi-V Belt | Multi-V Belt | Multi-V Belt | Multi-V Belt | Multi-V Belt | Multi-V Belt |
| Pad RPM | 1000 | 1000 | 1000 | 1000 | 1000 | 1000 |
| Cord**/** | 50' 14-3 | 50' 14-3 | 50' 14-3 | 50' 14-3 | 50' 14-3 | 50' 14-3 |
| Dust Control | No | No | No | Yes | No | Yes |

*230V Available *50Hz Available *** 75' Cord Available (12-3)
 ****100' Cord Available (12-3)

| | | | | |
|---------------|--|--|--|--|
| Model # | HCF1513-1500TE | HCF1515-1500TE | HCF1517-1500TE | HCF1517-1500TEDC |
| Part # | F1500-13TECF | F1500-15TECF | F1500-17TECF | F1500-17TECFDC |
| Pad Size | 13 inch | 15 inch | 17 inch | 16 inch |
| Power Source* | 115V 60Hz | 115V 60Hz | 115V 60Hz | 115V 60Hz |
| Motor/HP | 56 Frame, 1.5 HP AC TEFC, Dual Capacitor | 56 Frame, 1.5 HP AC TEFC, Dual Capacitor | 56 Frame, 1.5 HP AC TEFC, Dual Capacitor | 56 Frame, 1.5 HP AC TEFC, Dual Capacitor |
| Amp Draw | 10.3 | 11.7 | 13 | 12.3 |
| Belt Drive | Multi-V Belt | Multi-V Belt | Multi-V Belt | Multi-V Belt |
| Pad RPM | 1500 | 1500 | 1500 | 1500 |
| Cord**/** | 50' 14-3 | 50' 14-3 | 50' 14-3 | 50' 14-3 |
| Dust Control | No | No | No | Yes |

dB Rating:
 Standard Unit - 58
 Dust Control Unit - 51
 Meets GS42
Requirements
Specifications subject to change without notice.

Machine shown below with optional dust control system. Installation from factory only.

Dust filter (HPA0029-2) is easy to remove for cleaning or replacement.

Shown with optional splash guard



BlackHawk Floor Machine



ELKHART, IN



Machine operators will appreciate the solid performance of this economy floor machine that delivers on every job. The consistent performance of these floor machines makes them a good choice for the floor cleaning industry.

Features

- | | |
|---|---|
| <ul style="list-style-type: none"> • Triple idler, steel, planetary, helical-cut gear drives • All steel construction for superior strength and longevity • Thumb-operated safety switch • Negative pressure on/off switch • Dual steel operating trigger for left or right-hand operation • One-piece chrome, heavy duty steel handle for optimum durability | <ul style="list-style-type: none"> • Welded frame for rugged, reliable performance • Non-marking, 5" ball bearing wheels • Variable position positive lock handle and vinyl grips for operator comfort and safety • 360-degree wraparound bumper -- no tools needed for replacement |
|---|---|

H

A

W

K

Technical Specifications



H

A

W

K

| | | |
|--------------|---|---|
| Model # | BLKHVK17 | BLKHVK20 |
| Part # | BLKHVK17 | BLKHVK20 |
| Power Source | 115V 60Hz | 115V 60Hz |
| Motor/HP | 66 Frame 1.5 HP Dual Capacitor Motor | 66 Frame 1.5 HP Dual Capacitor Motor |
| Amp Draw | 5.9 | 6.5 |
| Gear Box | 3-Idler 10:1 | 3-Idler 10:1 |
| Brush RPM | 175 | 175 |
| Cord* | 50' 14-3 | 50' 14-3 |

*230V Available *50Hz Available *** 75' Cord Available (12-3)
****100' Cord Available (12-3)

Amp Draw with Appropriate Pad Driver

dB Rating: 56 Meets GS42 Requirements
Specifications subject to change without notice.

Accessories for Every Application

| Model # | BLKHVK17 | BLKHVK20 |
|---|---------------|---------------|
| Pad Driver - Tri-Lok | A0010-5 | A0011-4 |
| Pad Driver - Mighty-Lok | A0010 | A0011 |
| Polish Brush | A0004 | A0005 |
| Poly Brush | A0002 | A0003 |
| Nylon Brush | A0006 | A0007 |
| Grit Brush | A0008 | A0009 |
| Polish (LT Hogs Hair) Pads (5 Per Case) | A0025-17P-CS | A0025-20P-CS |
| Scrub (Red)Pads (5 Per Case) | A0026-17R-CS | A0026-20R-CS |
| Strip (Black) Pads (5 Per Case) | A0027-17BK-CS | A0027-20BK-CS |
| Tank | A0001-NAT4 | A0001-NAT4 |





BlackHawk 1250 Burnisher



ELKHART, IN



This 20", super-quiet, AC high-speed burnisher is only available in 1250 RPM. Remarkably easy to handle, they are the perfect choice for all areas.

Features

- | | |
|--|--|
| <ul style="list-style-type: none"> • 1.5 HP TEFC (totally enclosed fan cooled) motor • Flexible pad holder • Non-marking, 5" ball bearing wheels • Pad centering clamp • Thumb-operated safety switch • Negative pressure on/off switch • Dual steel operating trigger for left or right-hand operation | <ul style="list-style-type: none"> • One-piece chrome, heavy duty steel handle for optimum durability • Welded frame for rugged, reliable performance • Variable position positive lock handle and vinyl grips for operator comfort and safety • High density molecular weight plastic brush cover |
|--|--|

H

A

W

K



H

A

W

K

| | |
|---------------|--------------------------------|
| Model # | BLKHWK1250 |
| Part # | F1250-20TE-BH |
| Pad Size | 19 inch |
| Power Source* | 115V 60Hz |
| Motor/HP | 56 Frame, 1.5 HP TEFC AC Motor |
| Amp Draw* | 11.2 |
| Belt Drive | Multi-V Belt Drive |
| Pad RPM | 1250 |
| Cord** | 50' 14-3 |
| Dust Control | No |

*230V Available *50Hz Available

Amp Draw with Appropriate Pad Driver

dB Rating: 58 Meets GS42 Requirements
Specifications subject to change without notice.



BlackHawk 1500 Burnisher



ELKHART, IN



This 20", super-quiet, high-speed burnisher, is only available in 1500 and 2000 RPM. Remarkably easy to handle, they are the perfect choice for all areas.

Features

- 1.5 HP DC motor
- Flexible pad holder
- 5" non-marking ball bearing wheels
- Pad centering clamp
- Thumb operated safety switch
- Negative pressure on/off switch
- Dual steel operating trigger for left or right hand operation
- One-piece chrome, heavy duty steel handle for optimum durability
- Welded frame for rugged, reliable performance
- Variable position positive lock handle for operator comfort and safety
- Comfort style vinyl handle grips for ease of use

H

A

W

K

Technical Specifications

| | |
|---------------|-------------------------------|
| Model # | BLKHWK1500 |
| Part # | F1500-20-BH |
| Pad Size | 20 inch |
| Power Source* | 115V 50/60Hz |
| Motor/HP | 66 Frame, 1.5 HP DC Rectified |
| Amp Draw | 13.1 |
| Belt Drive | Multi-V Belt Drive |
| Pad RPM | 1500 |
| Cord** | 50' 14-3 |
| Dust Control | No |

*230V Available

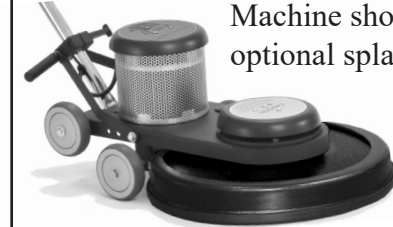
Amp Draw with Appropriate Pad Driver

dB Rating: 58 Meets GS42 Requirements
Specifications subject to change without notice.

Optional Dust Pick-Up System



Machine shown with optional splash guard



H

A

W

K



Hawk Propane Burnishers



To produce a hard, durable floor finish with an amazing shine that stands up under heavy traffic, nothing beats Hawk's propane burnishers!

Features

- | | |
|---|---|
| <ul style="list-style-type: none"> • No batteries to recharge • Minimum maintenance and high productivity • Super easy service and maintenance. • Clutch drive available (optional) • Premium fuel regulating system • Electric or battery engine start available. • UL/CUL listed starter and ignition for safety assurance • Heavy duty steel 20-pound propane tank | <ul style="list-style-type: none"> • Heavy duty frame construction that's rugged and reliable • Oversize drive bearings • Handle ergonomically designed, adjusts easily for operator comfort • Low emissions system on Kawasaki engines • Balanced engine and precision drive assembly for vibration prevention • Belt drive transmission |
|---|---|

H

A

W

K

Technical Specifications



H

A

W

K

| | | |
|--------------|------------------------------------|------------------------------------|
| Model # | PP21 | PP27 |
| Part # | F0028 | F0029 |
| Production | 25,000 sq. ft. per hr. | 33,000 sq. ft. per hr. |
| Engine* | Kawasaki 18 HP (Electric Start) | Kawasaki 18 HP (Electric Start) |
| Engine Speed | 3600 RPM | 3600 RPM |
| Tank | 20 Pound Steel Fill Tank | 20 Pound Steel Fill Tank |
| Pad Size | 21 Inch | 28 Inch |
| Pad RPM | 1800 | 1800 |
| Dimensions | 22 3/4" x 51 .5" x 40" | 27 3/4" x 56 3/4" x 40" |

* Dust control option available upon request. *

Specifications subject to change without notice.



BH20DT Air Mover

Injection molded housing makes it light weight and durable



3-hour timer

3-Speed switch accommodates any condition

Plastic rotary fan for durability and long life

Auxiliary Outlet using a 12 AMP outlet

H

A

W

K

| | |
|-------------------|-------------------|
| CFM | 800 |
| Horsepower | 1/5 |
| Amps | 1.5 |
| Speeds | 3 |
| Housing | PP Injection Mold |
| Weight | 10.2 lbs |
| Auxiliary Outlet | 12 amp |
| Timer | 3 Hour |
| Positions | 0°/20°/45°/90° |
| Cord | 10' 16-3 |
| Thermal Protected | Yes |

(Specifications subject to change without notice)

Small but mighty describes the BH20DT Air Mover. This powerful 800 CFM multipurpose mini air mover is economical to purchase and efficient to operate. At just 10 lbs, it transports easily and fits into tight spots including crawl spaces, closets, small rooms, attics, shower rooms, dormitories, hallways, recreational vehicles, and more. The auxiliary 12 amp outlet is for connecting multiple units in a series, for efficient air movement across a wider area. Built-in timer and speed control allows precise, controlled operation.





H

A

W

K

Auxiliary Outlet



This blower is equipped with a 12 amp circuit breaker power outlet, allowing multiple air movers to be connected.

Compact, light weight, and stackable.



0°



15°



45°



90°

The BH20DT can be positioned in 4 different angles to direct the air to the location of choice.



BH50 Air Mover

Injection molded housing makes it light weight and durable



3-speed switch for variable air flow

Plastic rotary fan for durability and long life

| | |
|-------------------|-------------------|
| CMF | 2800 |
| Horsepower | .5 |
| Amps | 5.0 |
| Speeds | 3 |
| Housing | PP Injection Mold |
| Weight | 19 lbs |
| Auxiliary Outlet | No |
| Positions | 0°/20°/45°/90° |
| Cord | 20' 16-3 |
| Thermal Protected | Yes |
| Transport Cart | Optional |

(Specifications subject to change without notice)

The rugged BH50 is a .5 HP air mover designed for sanitation, construction, and restoration. Made from a state-of-the-art, injection molded material, its reliability will give a long term performance. These air movers are equipped with a three speed dial, up to 2800 CFM, and are ideal for professional carpet cleaners.





Compact, light weight,
and stackable.



0°



15°



45°



90°

Optional telescopic transport
cart (BH50-WHLKIT)



The BH50 can be
positioned in 4
different angles to
direct the air to the
location of choice.

H

A

W

K



BH33ADT AIR Mover

Auxiliary outlet

Variable speed switch accommodates any condition

3-hour timer

Injection molded housing making it light weight and durable



| | |
|-------------------|---------------|
| CFM | 3600 |
| Horsepower | 1/3 |
| Amps | 3.2 |
| Speeds | Variable |
| Housing | ABS Injection |
| Weight | 24.9 lbs |
| Auxiliary Outlet | 12 amp |
| Positions | 360° |
| Cord | 20' 14-3 |
| Thermal Protected | Yes |

(Specifications subject to change without notice)

The BH33ADT is an exterior-rotor motor air mover. It is fully adjustable and comes with a 12 amp circuit breaker and a three-hour timer for unsurpassed functionality in all professional applications. Unlike other air movers, it is a variable speed controlled unit. The BH33ADT has specially designed blades for a better air focus and an extended air flow range. This allows the proper amount of air flow for any task at hand.





H

A

W

K



Compact, light weight,
and stackable.

360° Rotation





Hawk Industrial Air Mover



ELKHART, IN

Top-mounted quick change 3-speed switch accommodates any condition

Strong, steel handle for durability

Plastic rotary fan for durability and long life

Polyethylene housing with lifetime warranty - tough and durable

Metal safety guard - discharge



*Moves air
in three
directions*

Features:

- Continuous duty rugged ball bearing motor for long life and reliability
- Stackable for easy storage
- Only 31 lbs. – sturdy and easily portable
- Three Speed – 2950 CFM, 2500 CFM, 2000 CFM
- Rubber feet for non-slip positioning
- UL/CUL approved

H

A

W

K



H

A

W

K



BH001-BLK



BH001-RYB

* Other colors below available upon request - Minimum order required



Moody Blue



Hunter Green



Yellow



Charcoal



Red

| | |
|--------------------------|--|
| Model# | BH001-3S |
| Part # | BH001-BLK BH001-CHAR BH001-GRN BH001-MDB BH001-RED BH001-RYB BH001-YEL |
| Power Supply* | 115V 50/60 Hz |
| Motor | .5 HP, 3 Speed |
| Amps (low, medium, high) | 4.3/4.6/5.3 |
| Cord | 25' 16-3 |
| Dimensions | 19.5" x 14.5" x 18.25" |
| Product Weight | 31 lbs |
| dB Rating | Low 59, Medium 62, High 64 |
| Meets GS42 | Yes |

* 230V Units available *Specifications subject to change without notice.*



Hawk Harrier Backpack Vacuum



The top fill design on this lightweight, compact backpack vac is designed to prevent clogging so you can optimize cleaning time. Larger than most, the 6.5 quart capacity extends use time and the ergonomic construction of this 10.5 pound vacuum makes it ideal for cleaning in small areas.

Features

- Comfortably quiet – 72 dB(A) – for use in all types of environments
- Lightweight – only 10.5 lbs – reduces fatigue
- Comfortable harness with padded shoulder straps and quick lock adjustable fasteners
- Exceptional filtration captures fine particles and helps improve air quality.
- Eight rubber feet for maximum air exhaust
- Short pigtail cord for easy storage
- Disposable filter paper bag or cloth bag
- Polyethylene housing with lifetime warranty is tough and durable
- Complete tool kit includes flex hose, telescopic wand, curved wand, round dusting brush, two-way flat floor tool (hard and soft floor), and crevice tool

H

A

W

K

Technical Specifications



H

A

W

K

| Model# | Harrier I | Harrier II |
|----------------|--|--|
| Part# | V001-H1-115 | V001-H2-115 |
| Power Supply | 115V 50/60 Hz | 115V 50/60 Hz |
| Motor | 1 - Stage, NBP, with therm. | 2 - Stage NBP, with therm. |
| Water Lift | 95.8 Inches | 117.9Inches |
| CFM | 144 | 114 |
| Cord | 50' 16-3 | 50' 16-3 |
| Wand | 1-1/4" 2 Piece | 1-1/4" Telescopic |
| Hose | 1.25 w/ Curved Wand stretches to 6 Feet Long | 1.25 w/ Curved Wand stretches to 6 Feet Long |
| Filter Bags | 6-.5 Quart Cloth or Paper | 6-.5 Quart Cloth or Paper |
| Dimensions | 8"x9"x21" | 8"x9"x21" |
| Product Weight | 10.5 lbs (Cord Not Included) | 10.5 lbs (Cord Not Included) |
| | 205 in ² Bag area | 205 in ² Bag area |

Specifications subject to change without notice.

* Other colors below available upon request - Minimum order required



Black



Moody
Blue



Hunter
Green



Yellow



Charcoal



Red



V-BACK-TLKT

Hose and extension cord
included with each unit.



Cloth Bag
V-BACK-CLTHBAG



Paper Bag
VA005-3 (PACK OF 10)



Standard Motor Filter
V-BACK-STDFLT

Premium Motor Filter
V-BACK-PREMIUMFLT



Hawk Wet/Dry Tank Vacs



ELKHART, IN



HVWD10 - 85

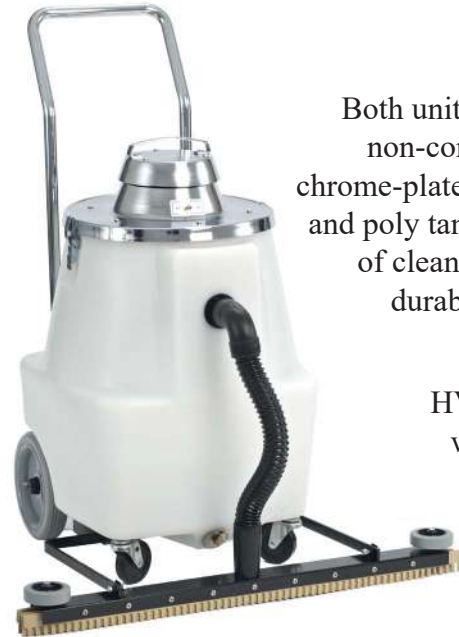


HVWD15 - 105

Non-marking wheels and casters for worry free cleaning in close quarters. Large wheels and casters make machines easy to maneuver.

Both units feature non-corrosive chrome-plated steel head and poly tanks for ease of cleaning and durability.

Built for years of trouble-free service, these machines really clean up when it comes to value! Wet/Dry Vacs feature a large selection of tools and attachments to fit every job requirement. Use them anywhere there's clean up work to be done.



HVWD15-105 with optional front mount squeegee

Features

- Heavy duty bypass vacuum motor
- Automatic liquid shut-off prevents motor flooding with foam and/or solution
- All models have acid and mildew resistant non-pleated synthetic high efficiency filters for extra value and longer life
- HVWD10-85 & HVWD15-105 have disposable paper filter bags for easy clean up
- Complete wet/dry tool kits included

H

A

W

K



Technical Specifications

| | | |
|-------------------------------|---|---|
| Model # | HVWD-10-85 | HVWD-15-105 (Extra Heavy Duty) |
| Part # | V002-10 | V003-15 |
| Power Supply* | 110V 50/60Hz | 110V 50/60Hz |
| Motor/HP | One 2-Stage Bypass 1.0 HP | One 2-Stage Bypass 2.0 HP |
| Amps | 8.0 | 10.7 |
| CFM | 112 | 95 |
| Water Lift | 85" | 105" |
| Cord | 35' 16-3 | 35' 16-3 |
| Tank Capacity | 10 Gallons | 15 Gallons |
| Drain | Yes | Yes |
| Recoverable Wet Capacity | 10 Gallons | 15 Gallons |
| Recoverable Dry Capacity | 1.0 Bushel | 1.5 Bushel |
| Tool Kit | Yes (Telescopic wand, 1.5 10" crush proof hose, squeegee tool, floor tool) | Yes (Telescopic wand, 1.5 10" crush proof hose, squeegee tool, floor tool) |
| Optional Front Mount Squeegee | No | (Part Number A0022) |
| Dimensions | 18" x 18" x 24" | 18" x 18" x 30" |
| dB | 76 | 79 |

* 230V Units available

Specifications subject to change without notice.

H

A

W

K



Hawk Wet/Dry Vacuums



Features

- | | |
|--|---|
| <ul style="list-style-type: none"> • Heavy duty bypass vacuum motor • Automatic liquid shut-off prevents motor flooding with foam and/or solution • Acid and mildew resistant, non-pleated synthetic, high efficiency filters for extra value and longer life • Complete wet/dry tool kit included with HVWD20-117 | <ul style="list-style-type: none"> • Roto-molded polyethylene tank • Non-marking 10" fixed wheels • Black, powder-coated push handle and vacuum head assembly • Non-marking 4" front swivel caster wheels • 1.5" x 30" tank drain hose • Tool caddy |
|--|---|

H

A

W

K



Technical Specifications

| | | |
|-------------------------------|--------------------------------|--------------------------------|
| Model # | HVWD20-117 | HVWD55-117 |
| Part # | V006-20 | V006-55 |
| Power Supply* | 115V 50/60Hz | 115V 50/60Hz |
| Motor | 2 Stage, BP, 5.7, 115V, 11.0 A | 2 Stage, BP, 5.7, 115V, 11.0 A |
| Motor CFM | 110 | 110 |
| Inches of Water Lift | 117.1 | 117.1 |
| Power Cord | 50' 16-3 | 50' 16-3 |
| Tank | Roto-molded polyethylene | 55 Gallon steel drum |
| Tank Capacity | 20 Gallons | 55 Gallons |
| Recoverable Capacity | 17 Gallons | 51 Gallons |
| Optional Front Mount Squeegee | V006-FMS | N/A |
| dB Rating | 78 | 78 |

* 230V Units available

Specifications subject to change without notice.



20 Gallon Wet/Dry
Tool Kit
Part # - VA002

Optional Drain
Valve
(55 Gallon only)



Wet/Dry With Optional
Front Mount Squeegee



H

A

W

K



Hawk Mini-Vactor 3.5 Gallon



ELKHART, IN

1" Diameter, 8'
long solution hose



.25" Quick
disconnect

Separate 3.1 gal.
solution and 3.5
gal recovery
tanks

4" Stainless steel
upholstery tool



Brass and stainless
steel valve

Single
nozzle

The Mini-Vactor is more than an ordinary spotter. This affordable, powerful, compact unit is designed for superior carpet and upholstery cleaning. Mini-Vactors are ideal for small to medium jobs.

Features:

- 2-stage 85" water lift vacuum motor, a 45 PSI oscillating pump, an 8' vacuum and solution hose, a 4" all stainless steel hand tool, and a 25' cord all standard.
- Float ball shut off in the recovery tank protects the vacuum motor from damage, and the spin-off clean out cover allows for easy cleaning of the recovery tank at the end of each job.
- The recovery tank releases easily, and has a carrying handle with pour spout for easy emptying.
- 3-position switch allows the operator to choose from the vacuum and spray mode, off, or the pre-spray mode.
- There is a built-in cord wrap on the recovery tank to help store the cord neatly.

H

A

W

K



H

A

W

K

| | |
|--------------------------|---|
| Model # | 3000B-HEAT |
| Solution Tank Capacity | 3.1 gal |
| Recovery Tank Capacity | 3.5 gal |
| Voltage | 115V 50/60 Hz |
| AMP Draw | 13 |
| Heater Watts | 700 |
| Water Heater Temperature | 190 °F |
| Vacuum Motor | 1 HP, 2-stage |
| Water Lift | 85" |
| Solution Pump Type | Oscillating |
| Solution Pump P.S.I | 45 |
| Power Cord | 25' 16-3 |
| Weight | 27 lbs |
| Construction | Rotational molded polyethylene |
| Switch | 3-position switch (vacuum motor & pump, off, pump only) |
| Dimensions | 9" x 18" x 20" |
| Solution & Vac Hose Set | 8' solution & vacuum hose included |
| Hand Tool | All stainless steel hand tool included |
| Optional Wand | EXTCR-WAND-10SS pictured below |

Specifications subject to change without notice.

**** NOTE: No-heat unit available by special request only ****



PART#
EXTCR-WAND-10SS

The 2-piece stainless steel wand features a 10" stainless steel head. It comes with an 10' solution and vacuum hose set. This accessory is great for larger clean up jobs where space is limited.



Hawk Talon Floor Machine



ELKHART, IN



50' Power Cord



Pad Driver



Pads
(1 of Each)

The Talon Edger can be set up with different accessories for any cleaning challenge. It utilizes Hawks Mag-Lok system for ease of operation. Built-up dirt in corners and on baseboards can be cleaned without bending and back-breaking effort.

Features:

- Enclosed gear belt drive that is durable
- Heavy duty molded housing is virtually indestructible
- 500 RPM brush speed delivers powerful performance
- 50-foot detachable power cord
- Quiet operation and powerful cleaning capabilities
- Ergonomic and light weight design makes this machine ideal for anyone to use

H

A

W

K



Technical Specifications

| Model# | Talon-6 | Talon-8 |
|--------------------|---|---|
| Part# | F0036-115-6 | F0036-115-8 |
| Power Supply Input | 115v 50/60 Hz AC | 115v 50/60 Hz AC |
| Motor* | 1/8 HP, 115V DC, 1.14A | 1/8 HP, 115V DC, 1.14A |
| Cord | 50' 16-3, 2-Peice | 50' 16-3, 2-Peice |
| Brush | 6" | 8" |
| Brush Speed | 500 | 500 |
| Dimensions | 6" x 11" x 47" adjustable to 52" | 6" x 11" x 47" adjustable to 52" |
| Weight | 10.5 lbs (Cord Not Included In Weight) | 10.5 lbs (Cord Not Included In Weight) |

* 230V Units available

Specifications subject to change without notice.

* Other colors below available upon request - Minimum order required



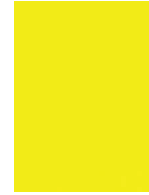
Royal
Blue



Moody
Blue



Hunter
Green



Yellow



Charcoal

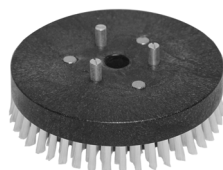


Red

Accessories

| Model# | Talon-6 | Talon-8 |
|--------------------------------|-------------|-------------|
| SolutionTank | A0001-TALON | A0001-TALON |
| Grit Edger Brush | AS001-6 | AS001-8 |
| Nylon Brush | AS002-6 | AS002-8 |
| Pad Driver | AS003-6 | AS003-8 |
| Grit Brush | AS005-6 | AS005-8 |
| Nylon Edger Brush | AS006-6 | AS006-8 |
| Bonnet (case of 6) | AS008-6 | AS008-8 |
| Red Scrub Pads (Case of 5) | AS009-6 | AS009-8 |
| Black Strip Pads (Case of 5) | AS010-6 | AS010-8 |
| White Polish Pads (Case of 5) | AS011-6 | AS011-8 |

Optional Accessories



Nylon Brush



Grit Brush



Nylon Edger



Grit Edger



Bonnet

H

A

W

K



Hawk Floor Machine Accessories

FLOOR MACHINE PAD DRIVERS AND SPECIALITY DRIVERS



Velcro Face

**Weighted Diamond
Pad Driver:**

| | |
|-----|------------------|
| 13" | A0017WTDPD (25#) |
| 15" | N/A |
| 17" | A0010WTDPD (46#) |
| 20" | A0011WTDPD (64#) |



6-1" Cutting
Heads (Option of 6
Additional Cutters
For a Total of 12)

**Hawk Scrapers
(Surface Prep):**

| | |
|-----|--------|
| 13" | HP0035 |
| 15" | N/A |
| 17" | HP0033 |
| 20" | HP0034 |

HPA0033RC 3 Pack
Replacement Cutters



6 Independently
Rotating Velcro Faces

**Orbitec Diamond
Driver:**

| | |
|-----|----------|
| 13" | HP0013-3 |
| 15" | N/A |
| 17" | HP0017-3 |
| 20" | HP0020-3 |



**Tri-Head Orbitec
Diamond Driver:**

| | |
|----------|----------|
| 6" Heads | HP0015 |
| 6" Heads | HP0015-8 |

ACCESSORIES



Hawk Floor Machine Accessories

FLOOR MACHINE BRUSHES



Grit (80) Brush:

| | |
|-----|-------|
| 13" | A0018 |
| 15" | A0038 |
| 17" | A0008 |
| 20" | A0009 |



Poly Brush:

| | |
|-----|-------|
| 13" | A0020 |
| 15" | A0036 |
| 17" | A0002 |
| 20" | A0003 |



Nylon Brush:

| | |
|-----|-------|
| 13" | A0016 |
| 15" | A0037 |
| 17" | A0006 |
| 20" | A0007 |



Polish Brush:

| | |
|-----|-------|
| 13" | A0021 |
| 15" | A0035 |
| 17" | A0004 |
| 20" | A0005 |



Nylon Carpet Glide Brush:

| | |
|-----|-------|
| 17" | A0060 |
| 20" | A0058 |

FLOOR MACHINE PAD DRIVERS



Tri-Lok Pad Driver:

| | |
|-----|---------|
| 17" | A0010-5 |
| 20" | A0011-4 |



Mighty-Loc

| | |
|-----|--------|
| 10" | A0047M |
| 13" | A0017 |
| 15" | A0034 |
| 17" | A0010 |
| 20" | A0011 |



High Speed

| | |
|-----|---------|
| 17" | A0010-3 |
| 20" | A0011-1 |



Tufted

| | |
|-----|---------|
| 17" | A0010-4 |
| 20" | A0011-3 |



Economy Sand Paper

| | |
|-----|---------|
| 17" | A0014 |
| 20" | A0014-1 |



Heavy Duty Sand Paper

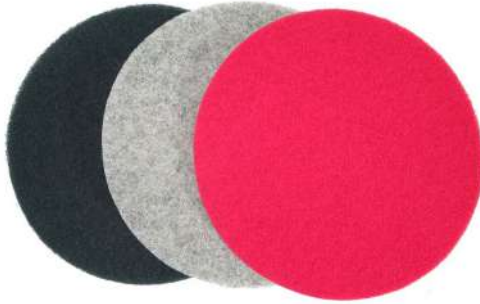
| | |
|-----|-----------|
| 17" | A0014-HD |
| 20" | A0014-1HD |

ACCESSORIES



Hawk Floor Machine Accessories

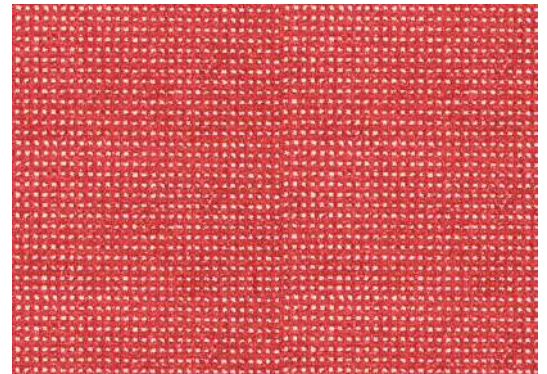
Floor Machine Pads



| Pads: (5 Per Case) | | | |
|----------------------------|------------------|------------|--------------|
| Size | Hogs Hair | Red | Black |
| 13" | A0025-13P | A0026-13R | A0027-13BK |
| 15" | A0025-15P | A0026-15R | A0027-15BK |
| 17" | A0025-17P | A0026-17R | A0027-17BK |
| 20" | A0025-20P | A0026-20R | A0027-20BK |

Floor Machine Screens

| | | | | | |
|----------------------------|-----------------|-----------------|-------------------|-------------------|-------------------|
| Red Heat Screen - 80 Grit | A0074-17-80-CS | A0074-20-80-CS | A0074-1410-80-CS | A0074-2014-80-CS | A0074-2814-80-CS |
| Red Heat Screen - 100 Grit | A0074-17-100-CS | A0074-20-100-CS | A0074-1410-100-CS | A0074-2014-100-CS | A0074-2814-100-CS |
| Red Heat Screen - 120 Grit | A0074-17-120-CS | A0074-20-120-CS | A0074-1410-120-CS | A0074-2014-120-CS | A0074-2814-120-CS |
| Red Heat Screen - 150 Grit | A0074-17-150-CS | A0074-20-150-CS | A0074-1410-150-CS | A0074-2014-150-CS | A0074-2814-150-CS |
| Red Heat Screen - 180 Grit | A0074-17-180-CS | A0074-20-180-CS | A0074-1410-180-CS | A0074-2014-180-CS | A0074-2814-180-CS |



Raptor & Merlin Pads

| | | | |
|---------------|---------------|---------------|---------------|
| White | A0065-1410-CS | A0065-2014-CS | A0065-2814-CS |
| Red | A0066-1410-CS | A0066-2014-CS | A0066-2814-CS |
| Blue | A0067-1410-CS | A0067-2014-CS | A0067-2814-CS |
| Green | A0068-1410-CS | A0068-2014-CS | A0068-2814-CS |
| Black | A0069-1410-CS | A0069-2014-CS | A0069-2814-CS |
| Light Hoghair | A0070-1410-CS | A0070-2014-CS | A0070-2814-CS |
| Safire | A0071-1410-CS | A0071-2014-CS | A0071-2814-CS |
| Green Astro | A0072-1410-CS | A0072-2014-CS | A0072-2814-CS |

ACCESSORIES

Hawk Solution Tanks



ACCESSORIES

4 Gallon Solution Tanks



ELKHART, IN



A0001-BLK4

A0001-NAT4

A0001-RYB4

A0001-CHAR4

A0001-MDB4

* Other colors available upon request - Minimum order required



Granite



Hunter Green



Red



Yellow

4.5 Gallon Tank



SME0193-1NAT4

6 Gallon Tank



SME0193-2BLK6-QRGF

2.5 Gallon Tank



A0001-BLK2.5



Hawk Floor Machine Accessories



ELKHART, IN

HPA0028-10BLK
10# Weight for
weight post kit



HPA0032-2BLK
20# Frame Weight

HPA0032-1BLK
25# Horseshoe
Weight

Weight Mounting Systems



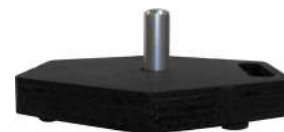
HP0008-45INSTAND



Weight Shown on a
HP0008-45INSTAND



HP0008-45INBRUTE



Weight Shown on a
HP0008-45INBRUTE

ACCESSORIES



Hawk Floor Machine Accessories

Floor Machine Dust Pick-up Systems



Dust Pick-up System For a Standard and High Speed Machines



Standard Floor Machine



High Speed Burnishner

| Dust Pick-up Systems Size: | Part Number: |
|----------------------------|----------------------|
| 17" Standard Machine | HP0031-DC17-STANDKIT |
| 20" Standard Machine | HP0031-DC20-STANDKIT |



Dust Pick-up System For a Glide or Merlin Machines



Glide/Merlin

| Dust Pick-up Systems Size: | Part Number: |
|----------------------------|----------------|
| 17" Wheels Down Machine | HP0031-DC17-WD |
| 20" Wheels down machine | HP0031-DC20-WD |



Dust Pick-up System For a BRUTE Machines



Brute/TEXHD

| Dust Pick-up Systems Size: | Part Number: |
|----------------------------|----------------------|
| 17" Brute Machine | HP0031-DC17-BRUTEKIT |
| 20" Brute Machine | HP0031-DC20-BRUTEKIT |

ACCESSORIES



Hawk Floor Machine Accessories

Floor Machine Splash Guards



Splash Guard With No Lip For 17 Inch Weighted Machines Only



Splash Guard With Lip For Non-Weighted Machines



Splash Guard For Wheels Down Machines

| Splash Guard Size: | Part Number: |
|------------------------------|---------------------|
| 13" | Splash13 |
| 15" | Splash15NL (No Lip) |
| 17" | Splash17 |
| 17" For Weighted Machines | Splash17NL (No Lip) |
| 17" For Wheels Down Machines | Splash17WD |
| 20" | Splash20 |
| 20" For Wheels Down Machines | Splash17WD |



Floor Machine Shown With Splash Guard



Burnisher Shown With Splash Guard



Glide Shown With Splash Guard

ACCESSORIES

